

AFT ~~PERK~~ LAWK

STA 20

WL	HB	SM	f(A)
7.4	8.68	1	8.68
6.89	8.20	4	32.80
6.37	7.38	2	14.76
5.86	4.90	4	19.60
5.34	0.10	1	0.10
			<u>75.94</u>

$A = \frac{2}{3} \times 0.51 \times 75.94 = 25.82$

STA 19 1/2

WL	HB	SM	f(A)
7.4	9.06	1	9.06
6.83	8.60	4	34.40
6.26	7.69	2	15.38
5.69	4.70	4	18.80
5.12	0.10	1	0.10
			<u>77.74</u>

$A = \frac{2}{3} \times 77.74 \times 0.57 = 29.54$

STA 19

WL	HB	SM	f(A)
7.40	9.40	1	9.40
6.71	8.86	4	35.44
6.02	7.78	2	15.56
5.33	4.28	4	17.12
4.64	0.10	1	0.10
			<u>77.62</u>

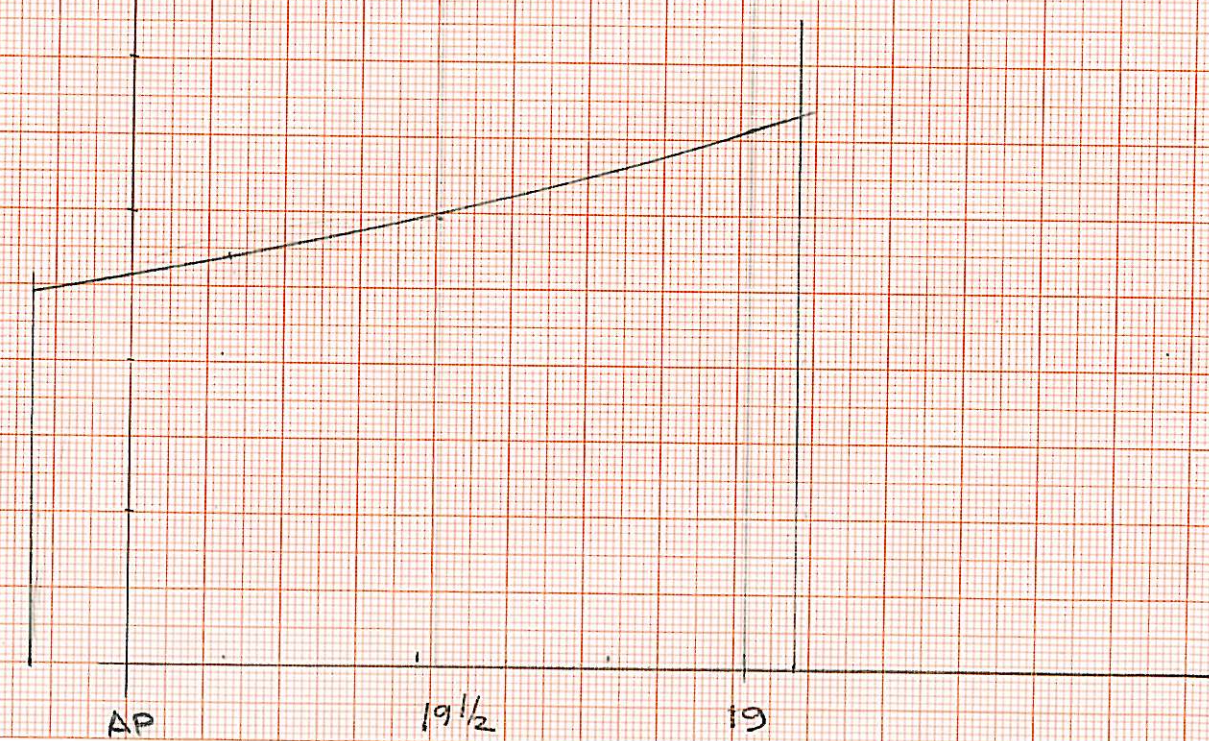
$A = \frac{2}{3} \times 77.62 \times 0.69 = 35.71$

### AFT PEAK TANK

LOCATION DIST FROM A.P.	AREA	SM	f(V)
164.10	24.50	1	24.50
161.575	27.00	4	108.00
159.05	29.60	2	59.20
156.525	32.90	4	131.60
154.00	36.60	1	36.60
			<u>359.90</u>

$$\text{Vol} = \frac{1}{3} \times 359.90 \times 2.525$$

$$= 302.91 \text{ M}^3$$



ENCLOSURE (C)

LIST OF COMPARTMENTS

ITALIAN HELICOPTER CARRIER  
GIUSEPPE GARIBALDI

Italcantieri Plan No. P1092-303 (Sovrastrutture) dated 31 May 1977

English Equivalent Terminology

Italian Compartment Name

07 Level

(6ª Tuga)

Missile (Albatros) Equipment Room No. 1 <i>Electronic Warfare (?)</i>	Locale Appartati Vanessa e Albatros No. 1
Signal Station	Locale G.E.
TV Center	Stazione Segnali
Uptakes	Centrale TV
	Cofano Scarichi

06 Level

(5ª Tuga)

Bridge	Plancia Timoneria
Elevator	Ascensore
Combat Information Center	Locale COC
Void	Intercapedine
Missile (Albatros) Equipment Room No. 2	Locale Appartati Vanessa e Albatros No. 2
-----(?)	Locale CTA
Flight Service Space	Plancia Servizio Voło

05 Level

(4ª Tuga)

Radio Station No. 1	Stazione Radio No. 1 - ASC - CIFRA
Operations Room for Command Complex	Sala Operativa Comando Complesso
Officers Toilet	Igiene Ufficiali
Fan Room	Condizionatori
Missile (Teseo) Eqpt Room	Appartati Teseo
<i>Anti-Submarine Apparatus Room</i>	Locale AS
Rocket Space	Riserv. Razzi
Observation Station	Osserv. Lancio

04 Level

(3ª Tuga)

Computer Room	Locale Calcolatori SCC
PO Washroom & Watercloset	Igiene Sottufficiali
Radar Room No. 1	Locale Radar No. 1
Radar Room No. 2	Locale Radar No. 2
Meteorology Room	Sala Nautica Ed Ufficio Meteo
Crew Toilet	Igiene Equipaggio

English Equivalent Terminology

Italian Compartment Name

03 Level

(2<sup>a</sup> Tuga)

Forward Missile Storeroom  
Operations Office  
Radio Station No. 2  
Conference Room  
Deck Toilet  
Deck Gear Locker  
Aft Missile Storeroom

Deposito Missili Prodiero  
Segreteria Operativa  
Stazione Radio No. 2  
Sala Conferenze  
Igiene di Servizio  
Disponibile  
Deposito Missili Poppiero

Plan No. P1092-304 Ponte Volo e 1<sup>a</sup> Tuga dated 31 May 1977

Flight Deck or 02 Level

Ponte Volo e 1<sup>a</sup> Tuga

Walkway  
Kerosene Storage  
Admirals Pantry  
Deck Toilet  
Fire Station  
Conference Room  
Admirals Lounge  
Captains Lounge  
Admirals Cabin  
Captains Cabin  
Chief of Staff  
Control Room (Decontamination)  
Dosimetry Room  
Decontamination Space  
Vestibule  
Air Operations Office  
Flight Briefing Room  
Flight Waiting Room (?)

Passerella  
Ergoz Ker  
Riposto Ammiraglio  
Igiene  
Parco Antincendid  
Sala Consiglio  
Salotto Ammiraglio  
Salotto Comandante  
Cabina Ammiraglio  
Cabina Comandante  
Aiutante di Bandiera  
Controllo  
Contr Dosim  
Staz di Decon - Svestizione  
Vestizione  
Segreter Operaz Aeree  
Sala Attesa Vold  
Linea Vol 1

01 Level

1<sup>o</sup> Corridoio

General Stores  
Storage for Lubricants (Armament)  
  
PO Baggage Room  
Bosuns Storeroom  
Rope Storeroom  
Officers Baggage Room  
Anchor Handling Space  
Ships Store  
Wine Elevator  
Canteen  
Library  
Crew Messroom

Deposito Materiali Di Consumo  
Deposito Materiali Fluidi e Lubrif.  
Artigliera  
Deposito Bagagliaio Sotuff.  
Dep. CC Nocch  
Deposito Cavi  
Deposito Bagagliaio Ufficiali  
Zona Manovra Prodiera  
Coop Equip  
Elev. Vini  
Staz. Riforn  
Biblioteca  
Zona Pranzo Equipaggio

Scullery	Lavagamella
Crew WR & WC	Igiene Equipaggio
Crew Barber Shop	Barbiere Equip
Tailor	Sartoria
Shoemaker	Calzolaio
Dardo Gunfire Control Room	Apparti Dardo
Refueling Station	Staz. Riforn
Crew/Sargent Equipment Distribution Rm (Possibly Landing Force Eqpt Room?)	Distributorio Equipaggio Sargenti
Crew Galley	Cucina Equipaggio
Bakery	Forno
Fwd Machinery Air Intake Vent.	Prese Aria Macch. Prodiera
Vent	Aria Raffa. Tag
Storeroom	Estraz Aria Macch.
CPO/Petty Officer Bar	Deposito
CPO/Petty Officer Messroom	Bar 2 <sup>1</sup> Capo
CPO/Petty Officer Pantry	Quadrato 2 <sup>1</sup> Capi
Galley	Riposto 2 <sup>1</sup> Capi
Aft Machinery Uptake	Cucina SU <i>SU = Petty officers</i>
Warrant Officer Pantry	Prese Aria Macch Poppa
Warrant Officer Messroom	Riposto Maresc.
Warrant Officer Anteroom	Quadrato Maresc.
Warrant Officer Lounge	Antiquadr Maresc.
Warrant Officer WR & WC	Saletta Maresc.
Warrant Officer Bar	Igiene Maresc.
Officers Lounge	Bar Baresc
Officers Anteroom	Saletta Ufficiali
Officers WR & WC	Antiquadrato Ufficiali
Officers Messrom	Ig Ufficiali
Officers Pantry	Quadrato Uff
Officers Barber Shop	Riposto Uff
Officers Dark Room	Barbiere Uff
Photo Laboratory	Camera Oscura
Missile (Teseo) Eqpt Room	Cab. Fotogr.
Post Office	Apparti Teseo
----- (2) Shore power supply	Postino
Administration Office	Prese di Terra
Safe	Segreteria Amministr.
Dardo Gunfire Control Room	Cassa
Teseo Storeroom	Apparati Dardo
Missile (Teseo) Eqpt Room	Deposito No. 6 Teseo
Officers Galley	Apparti Teseo
Printing Room	Cucina Uff
Athletic Gear Strm	Tipografia
7 <sup>0</sup> and 8 <sup>0</sup> Division Office (Engineers)	Deposito Attrezzi Sportivi
6 <sup>0</sup> Division Office (Electrical)	Seg 7 <sup>0</sup> & 8 <sup>0</sup> Rep
Ammunition Elevator	Seg 6 <sup>0</sup> Rep
Cabin	Elev. Muniz
	Cabina

~~Commanders~~

Air Detachment ~~Officers~~ Lounge  
 Executive Officers Lounge  
 Senior Officer (Commandos) SR  
 Executive Officer (Commandos) SR  
 Commando Office Complex  
 Commando Office

Salotto Com Te Forza Aerea  
 Salotto Com In 2<sup>a</sup>  
 Salotto SCSM/Cabina  
 Salotto CSM/Cabina  
 Segr. Comando Complesso  
 Segr. Comando

Plan No. P1092-306. 2<sup>o</sup> Corridoio, dated 31 May 1977

Hangar (Main) Deck

Bosuns Storeroom  
 Bosuns Storeroom  
 Anchor Windlass Room  
  
 Fan Room  
 Dry Provision Strm  
 Weapons Office  
 Dry Provision Strm  
 40mm Magazine  
 Pressing  
 Clean Linen Locker  
 (?) Office for *9<sup>th</sup> Department*  
 Aviation Office  
 3 and 4 Division Office  
 Preparation and Control Space }  
 for Torpedoes and Missiles }  
 Laundry  
 Soiled Linen Locker  
 Weapons Strm  
 Fwd Emergency Generator Space  
 2<sup>o</sup>-5<sup>o</sup> Division Office  
 Hospital  
 Isolation Ward  
 Infirmary (Ward)  
 Pharmacy  
 Dentist Office  
 Gas Cylinder and Misc Items }  
 for Hangar Safety }  
 Aviation Engine Shop  
 Helicopter Electronics }  
 Laboratory and Workshop }  
 Battery Charging  
 Operations Officer for }  
 Electronics Laboratory }  
 Ships Electrical and Electronic }  
 Workshop }  
 Flight Office and Security Materials

2<sup>o</sup> Corridoio

Deposito Nostromo  
 Deposito C/C Nocchiere  
 { Locale Argani e Accesso  
 Pozzi Catene  
 Locale Condizionatori  
 Deposito Materiali di Consumo  
 Segreteria Technica Armi  
 Deposito Materiali di Consumo  
 Deposito Muniz Mitiagliera da 40/70  
 Stireria  
 Biancheria Pulita  
 Segreteria Dett e Mar = *Stewards*  
 Segreteria Servizio Volo  
 Segreteria 3<sup>o</sup>-4<sup>o</sup> Reparto  
 { Locale Preparazione e Controllo Missili  
 e Siluri  
 Lavanderia  
 Biancheria Sporca  
 Deposito Armi 40/70  
 Centrale di Emergenza Pradiera  
 Segreteria 2<sup>o</sup>-5<sup>o</sup> Reparto  
 Ambulatorio  
 Isolamento  
 Infermeria  
 Farmacia  
 Gabinetto Odontoiatra  
 Bambole e Disp. di Sicurezza Hangar  
  
 Officina Turbomotori  
 { Laboratorio Elettronica e  
 Off Eim Elicotteri  
 Carica Batterie  
 Uff. Dirigente Laborat. Elettronico  
  
 Officina Elettrica Elettronica Nave  
  
 Ufficio e Materiali Sicurezza Volo

Equipment Storage  
Helicopter Rotor Stowage (*blades*)  
Aviation Structures Workshop

Technical Services Office  
Aft Emergency Generator Room

~~Divers Store~~

CPO Barber Shop

~~Office of the Store Keeper for material with FSM~~

~~40mm Magazine Store of the Store Keeper~~

Raw Material Strm

Aft Accommodation }

Ladder Space }

OOD Station

CPO Hangar Office

Central Telephone

Technical Hangar Officer Office

Office of Documents and Statistics

Elevator Machinery Room

Dardo Gun Fire Control Room

Aircraft Workshop and Storeroom

Attrezzzeria

Rastrelliera Per Pale Elicotteri

{Officina Lattonieri

{Officina Montatori

C. Servizio Technico

{Centrale di Emergenza

{Poppiera

Locale SDAI

Barbiere Suttofficiali

Ufficio C/C

Magazzino C/C

Deposito Materie Prime

Barcarizzo Poppiero

Corpo di Guardia

Capo Hangar

Centralino Telefonico

Uff Technico Hangar

Uff Documentaz e Statistica

Macchin. Ascens.

Apparti Dardo

{Officina e Deposito

{ Armamento Servizio Volo

Plan No. P1092-307, 3<sup>o</sup> Corridoio, dated 31 May 1977

2nd Deck

Storeroom ~~(#)~~

Logistics Office

Dubwaiter

Refrigeration Machinery

Elevator Machinery Room

CPO WR, WC & Shower

Mechanical Workshop

Inert Gas Cylinder Strm

Gas Cylinder Strm for Electrical }

Control Rooms }

Technical Office }

Central Propulsion Operation Center

~~Electrical (#) Circuit continuity apparatus Room~~

Church

Chaplain

Storeroom for Chief Petty Officer- }

Electrical }

Storeroom for Chief Petty Officer- }

Flight Operations }

3<sup>o</sup> Corridoio

Deposito

Segreteria Logistica

Montavivande

Macchinario Frigorifero

Macchinario Elevatore

Igiene Suttofficiali

Officina Meccanica

Bambole Gas Inerte AM

Bambole per Locale Quadri Elettrici

{Segreteria Tecnica E.

{Segreteria Tecnica GN

Centrale di Sicurezza e Propulsione

Gruppi Continuita

Cappella

Cappellano

Deposito Capo Carico Elettricista

Deposito Capo Carico Servizio Volo

Plan No. P1092-308, 1<sup>o</sup> Copertino, dated 31 May 1977

1st Platform

Forepeak Tank  
Chain Locker  
Crew Wine Store  
CPO Wine Store  
Officers Wire Store  
Aircraft Missile Strm  
Torpedo Storeroom  
Flour Storeroom  
Crew Food Storeroom  
CPO Food Storeroom  
Officer Food Storeroom  
Lounge  
Oil Skin Locker (Water proof coats)  
Seabag Strm  
Fwd Gyro Room  
Electric Control Room  
Carpenters Strm  
Steering Gear Room  
Mechanical Strm

1<sup>o</sup> Copertino

Gavone Prodiero  
Pozzo Catene  
Vinicola Equipaggio  
Vinicola Sottufficiali  
Vinicola Uffiali  
Deposito Missili Marte  
Deposito Siluri  
Deposito Farina  
Cambusa Equipaggio  
Cambusa Sottufficiali  
Cambusa Ufficiali  
Quadratino  
Cerate  
Zaini  
Girobussola Av.  
Locale Quadri Elettrici  
Deposito C/C Carpentiere  
Agghiaccio Timone  
Deposito C/C Meccanico

Plan No. P1092-309, 2<sup>o</sup> Copertino, dated 31 May 1977

2nd Platform

Electrical Storeroom  
Electrical Switchboard Room  
Ammunition Storeroom  
Meat Preparation Room  
CPO Refrigerated Strm  
Officers Refrigerated Strm  
Refrig. Meat Storeroom  
Refrig. Vegetable Storeroom  
Frozen Food Storeroom  
Thaw Room  
Kerosene Tank *Kero = JP5*  
(?) Storeroom  
(?) Storeroom  
Kerosene Tank Refueling Tk  
Fuel Oil Service Tank  
Forward Machinery Room  
Forward Stabilizer Tank  
Fresh Water Tank  
Fuel Oil Refueling Tank

2<sup>o</sup> Copertino

Deposito C/C ECG  
Locale Pannelli ECG  
Munizioni  
Locale Preparazione Carni  
Cella Sottufficiali  
Cella Ufficiali  
Cella Carne  
Cella Verdura  
Cella Surgelati  
Anticella  
Ker.  
Deposito C/C RT *Radio telegraphist Petty officer*  
Deposito C/C RD *Radar Petty officer*  
Ker. Imbarco  
Nafta Servizio  
Apparato Motore Prodiero  
Locale Stabilizzatori Prodiero  
Acqua Alimento  
Nafta Imbarco



Aft Machinery Room	Apparto Motore Poppiero
Aft Stabilizer Tank	Locale Stabilizzatori Poppiero
<del>Flare Signal</del> <i>(?) Storeroom</i>	Deposito Bengala (MK 45)
Storeroom for Helicopter Arms & Munitions	Deposito Armi & Munizione Elicotteri
PO Weapons Storeroom	Deposito C/C Armi
NAFTA	Fuel Oil
PO Torpedo Storage	Deposito C/C Torpediniere
Ballast	Zavorra
Purifier <i>and water separator</i>	Depuratore
Aft Peak Tank	Gavone Poppiero

Plan No. P1092-310, "Stiva" dated 31 May 1977

Hold

Stiva

Salt Water Ballast Tank	Cassa Acqua Zavorra
Fuel Oil Tank	Cassa Nafta
Potable Water Tank	Cassa Acqua Dolce
<del>JPS</del> Kerosene Tank	Cassa Kerosene
Stabilizer Room	Locale Stabilizzatori
<del>Contam</del> Water Tank <i>Heater</i>	Riscald Acqua Lav
Sewage Tank	Depuratore Liquame
Air Conditioning Machy Room	Centrale di Condizionamento
Degaussing Room	Locale Smagnetizzazione
Heel Tank	Cassa Acqua Bilanciamento

14  
98  
18  
19.8

W

FWD ENGINE - FWD <del>2195</del>	2219.50	M <sup>3</sup>
ELECTRIC CONTROL ROOM	<del>110.42</del>	M <sup>3</sup>
FUEL OIL SERVICE TK	-31.86	M <sup>3</sup>
↓	-31.86	M <sup>3</sup>
L.O. RESERVE TANK	-10.41	
DIRTY L.O.	-11.45	
REDUCTION GEAR L.O.	-13.22	
PROPELLER OIL	-2.92	
BALLAST TK	-43.47	
" "	-29.08	
<del>FRESH WATER</del> VOID	-14.36	
BALLAST TANK	-18.98	
VOID	2.20	
DISTILLED WATER.	-9.69	
MISC. TK.	-8.70	

1875.83

AFT ENGINE ROOM	2411.28
ELECTRIC CONTROL ROOM	-113.72
FUEL OIL SERVICE TK	-44.04
↓	-44.04
FRESH WATER TANK	-10.20
DRAIN TANKS (4-6 CK)	-9.70
LUBE OIL	-2.92
↓	-13.22
LUBE OIL	-11.45
VOID	-10.41
VOID	-2.20
VOID	-14.36
	<u>2135.02</u>

19.32  
19.32

GROUP	DESCRIPTION	Weight	Center of Gravity								% Wt Calc	
			Above Base	Moments	Referred to <u>A.P.</u>			Tran	Port Moments	Stbd Moments		
					Fwd	Moments	Aft					Moments
1	HULL STRUCTURE	5291.	37.82	200,079	252.7	1,337,039			0.6	4433		
2	PROPULSION	805	20.54	16,537	213.1	1,715,67			1.9	1507		
3	ELECTRIC PLANT	610	40.12	24,474	253.4	1,545,7			4.9	2981		
4	COMMUNICATION AND CONTROL	220	52.40	11,527	281.2	618,65			9.2	2024		
5	AUXILIARY SYSTEMS	1294	38.10	49,295	263.2	340,619			4.0	5051		
6	OUTFIT AND FURNISHINGS	929.	48.53	45,085	262.7	2,429,76			0.7	610		
7	ARMAMENT	42	81.93	3,441	264.5	1,110,9			21.5	837		
	LIGHT SHIP NO MARGIN	9191	38.13	350,438	252.4	2,319,25			0.15	1395		
	SHIPYARD MARGIN	133	52.49	6,982	252.6	335,99						
	SHIP IN LIGHT CONDITION	9324	38.33	357,420	252.4	2,352,85			0.15	1395		
	BASE ABOVE/BELOW BOTTOM OF KEEL - FEET											
	CENTFR OF GRAVITY ABOVE BOTTOM OF KEEL - FEET											
<p>CONDITION A - LIGHT CONDITION</p> <p>Ship complete, ready for service in every respect, including permanent ballast (solid and liquid), and liquids in machinery at operating levels, without any items of variable load, and without airplanes. This condition shall represent the ship under wartime conditions, with ultimate armament and boat allowance aboard.</p>		DRAFT CORRESPONDING TO ABOVE DISPLACEMENT AT CENTER OF FLOTATION									FEET	
		TRANSVERSE METACENTER ABOVE BOTTOM OF KEEL AT ABOVE MEAN DRAFT									FEET	
		C.G. ABOVE BOTTOM OF KEEL				FEET	GM					FEET
		MOMENT TO ALTER TRIM 1 INCH									FT. TONS	
		C.B. OF SHIP ON EVEN KEEL AT ABOVE DRAFT FORWARD/AFT OF REFERENCE FRAME									FEET	
		C.G. FORWARD/AFT OF REFERENCE FRAME									FEET	
		TRIMMING LEVER FORWARD/AFT									FEET	
		$\text{TRIM} = \frac{\text{DISP'T (tons)} \times \text{TRIMMING LEVER (ft.)}}{\text{MOMENT TO ALTER TRIM 1 IN. (ft. tons)} \times 12} =$									FEET BY HEAD/STERN	
		$\text{DIFF. IN DRAFT BETWEEN L.C.F. AND MIDSHIPS} = \frac{\text{TRIM} \times \text{CG OF WP AFT OF MP (ft.)}}{\text{L.B.P. (ft.)}} =$									FEET INCREASE/DECREASE	
		$\text{LIST} = \frac{\text{HEELING MOMENT (ft. tons)}}{.01745 \times \text{DISP'T (tons)} \times \text{GM}} =$									DEGREES PORT/STARBOARD	
DRAFTS ABOVE BOTTOM OF KEEL AT PERPENDICULARS:		FORWARD	FEET,	AFT	FEET,	MEAN	FEET					

18471-119  
 ITALIAN SCS  
 WH4  
 12/17/78

FORE PEAK TANK VOLUME

STA 0

WL	HB	SM	f(A)	WL	HB	SM	f(A)
0.25	0	1	—	6.50	—	1	—
1.24	0.96	4	3.84	8.25	0.13	4	0.52
2.23	0.94	2	1.88	10.00	0.59	1	0.59
3.21	0.60	4	2.40				<u>1.11</u>
4.20	0	1	—				
			<u>8.12</u>				

$A = 8.12 \times \frac{1}{3} \times 0.99 \times 2 = 5.36$   
 $A = 1.11 \times \frac{1}{3} \times 1.75 \times 2 = 1.30$   
 TOTAL AREA = 6.66

STA 1/2

WL	HB	SM	f(A)
0	0.100	1/2	0.05
0.5	0.70	2	1.40
1.0	0.98	1 1/2	0.98
1.5	1.11	2	2.22
2.0	1.13	1 1/2	1.70
3.0	1.02	4	4.08
4.0	0.83	2	1.66
5.0	0.69	4	2.76
6.0	0.60	2	1.20
7.0	0.56	4	2.24
8.0	0.63	2	1.26
9.0	0.85	4	3.40
10.0	1.28	1	1.28
			<u>24.23</u>

$A = \frac{1}{3} \times 1.00 \times 24.23 \times 2 = 16.15$

STA 1

WL	HB	SM	f(A)
0	0.1	1/2	0.05
1/2	0.8	2	1.60
1	0.98	1	0.98
1 1/2	1.31	2	2.62
2	1.39	1 1/2	2.09
3	1.42	4	5.68
4	1.35	2	2.70
5	1.29	4	5.16
6	1.24	2	2.48
7	1.25	4	5.00
8	1.36	2	2.72
9	1.63	4	6.52
10	2.15	1	2.15
			<u>39.75</u>

$$A = \frac{1}{3} \times 2 \times 1.00 \times 39.75 = 26.50$$

STA 2

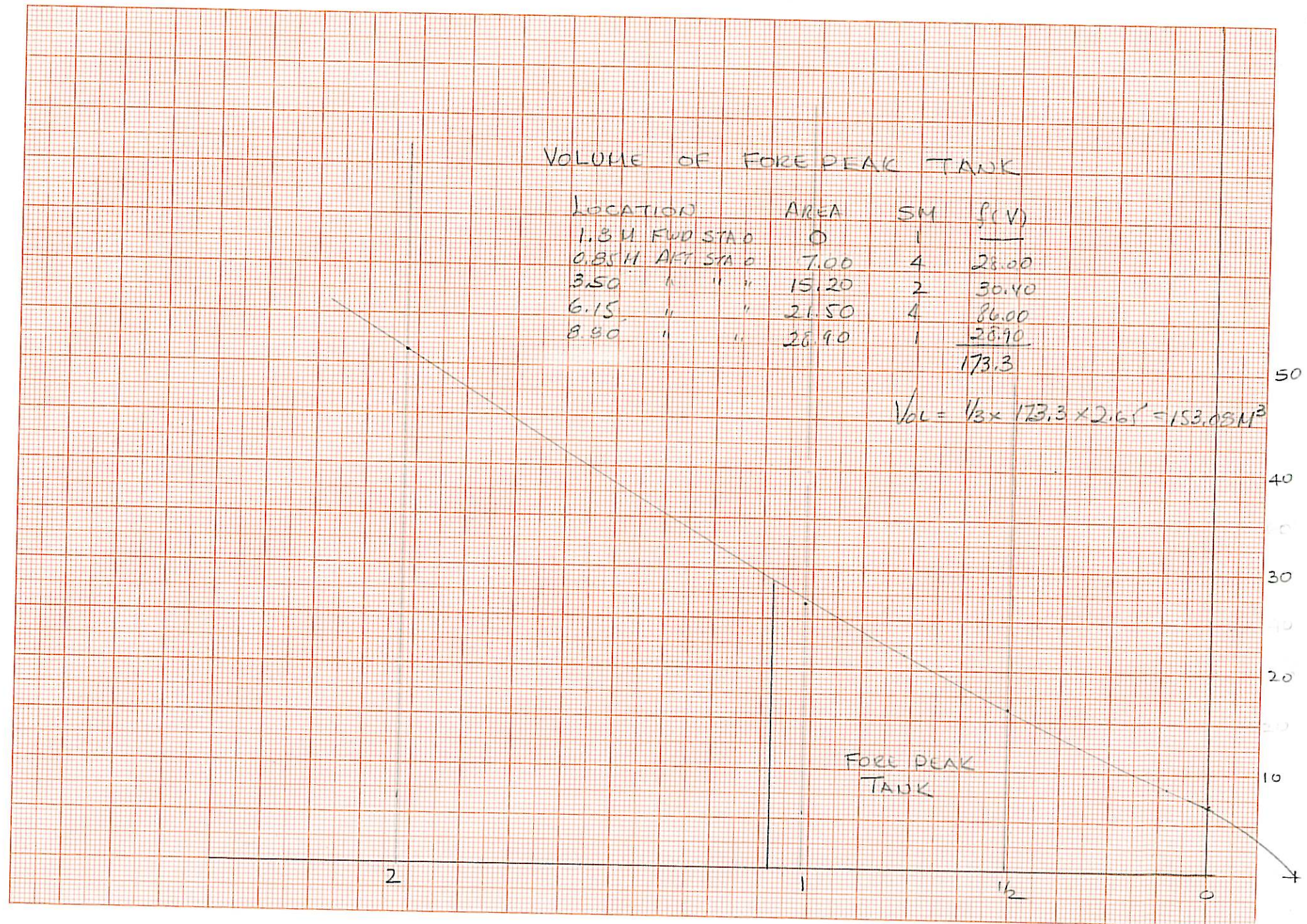
0	0.10	1/2	0.05
1/2	1.05	2	2.10
1	1.51	1	1.51
1 1/2	1.84	2	3.68
2	2.07	1 1/2	3.11
3	2.34	4	9.36
4	2.51	2	5.02
5	2.61	4	10.44
6	2.72	2	5.44
7	2.87	4	11.48
8	3.13	2	6.26
9	3.57	4	14.28
10	4.25	1	4.25
			<u>76.98</u>

$$A = \frac{1}{3} \times 76.98 \times 2 \times 1.0 = 51.32$$

VOLUME OF FORE PEAK TANK

LOCATION	AREA	SM	f(V)
1.34 FWD STAD	0	1	—
0.85 H APT STAD	7.00	4	28.00
3.50 " " "	15.20	2	30.40
6.15 " " "	21.50	4	86.00
8.80 " " "	28.90	1	28.90
			<u>173.3</u>

$$Vol = \frac{1}{3} \times 173.3 \times 2.65 = 153.08 M^3$$



3:35  
12/8/78

W. GARZKE X 2916

PROGRAM		PROGRAMMER	CODE OFFICE	DATE	SHEET ① of					
TYPE WORK		REMARKS			TYPE WORK COMPLETED BY	DATE COMPLETED				
<input type="checkbox"/> DAY PUNCH <input type="checkbox"/> OTHER										
LINE	TAGGART NO.	COMPARTMENT NAME	FORTRAN STATEMENT	COMPT NO.	AREA	VOL	CODE	IDENTIFICATION		LINE
								SEQUENCE	SHIP NO.	
1	1.222	MISSILE EQPT ROOM		07-58-1-C	16.20	38.88			JSCS	1
2	3.810	ECM EQPT ROOM		07-61-1-C	38.45	92.28			JSCS	2
3	1.112	SIGNAL STATION		07-68-1-C	10.08	24.19				3
4	2.254	T.V. CENTER		07-69-3-C	4.99	11.98				4
5	3.700	ACCESS TRUNK		07-69-1-T	1.80	4.32				5
6	3.260	UPTAKES (07 LEVEL)		06-72-1-E	57.81	138.74				6
7	3.260	UPTAKES (ABV 08 LEVEL)		06-72-1-E	0.00	216.79				7
8	3.111	BRIDGE		06-54-1-C	41.36	103.40				8
9	3.315	ELEVATOR (06 LEVEL)		1-58-3-T	2.21	5.53				9
10	3.700	ACCESS TRUNK		06-58-1-T	4.26	10.65				10
11	1.113	COMBAT INFO CENTER		06-59-1-C	122.64	306.60				11
12	3.640	VOID (06 LEVEL)		04-71-1-V	1.85	4.63				12
13	3.700	PASSAGE		06-70-1-L	12.81	32.02				13
14	3.700	PASSAGE		06-76-1-L	15.80	39.50				14
15	3.260	UPTAKES (06 LEVEL)		06-72-1-E	52.42	131.05				15
16	3.640	VOID		06-80-1-V	2.94	7.35				16
17	1.222	MISSILE EQUIPT ROOM		06-80-3-C	14.50	36.25				17
18	3.810	LOCAL C.T.A.		06-83-3-C	23.58	58.95				18
19	1.314	FLIGHT SERVICE SPACE		06-33-1-C	26.07	65.17				19
20										20
21	1.640	OPERATIONS ROOM FOR <b>FLEET COMMAND</b>		05-54-3-C	14.24	35.60				21
22	2.113	OFFICERS WC (58-60)		05-58-1-L	3.18	7.96				22
23	3.700	ACCESS TRUNK		05-57-1-T	11.02	27.55				23
24	3.315	ELEVATOR (05 LEVEL)		1-58-3-T	2.21	5.53				24
25	1.111	RADIO STATION NO. 1		05-54-1-C	106.61	266.53				25

06 LEVEL

2-6

05 LEVEL

PROGRAM		PROGRAMMER	CODE/OFFICE	DATE	SHEET (2) of					
05 LEVEL CONT'D - 04 LEVEL										
TYPE WORK		REMARKS	TYPE WORK COMPLETED BY	DATE COMPLETED						
<input type="checkbox"/> ELY FUNCN <input type="checkbox"/> OTHER										
LINE	TAGGART NO.	COMPARTMENT NAME	FORTRAN STATEMENT	COMPT NO.	AREA	VOL	CODE	IDENTIFICATION SEQUENCE	SHIP NO	LINE
			1 2 3 4 5 6 7 8 9 10 11 12 13 14 15 16 17 18 19 20 21 22 23 24 25 26 27 28 29 30 31 32 33 34 35 36 37 38 39 40 41 42 43 44 45 46 47 48 49 50 51 52 53 54 55 56 57 58 59 60 61 62 63 64 65 66 67 68 69 70 71 72 73 74 75 76 77 78 79 80							
1	3.640	VOID (05 LEVEL)		04-71-1-V	3.00	7.50			JSCS	1
2	3.700	PASSAGE		05-68-1-L	14.48	36.20				2
3	3.700	PASSAGE		05-76-1-L	35.34	88.35				3
4	3.260	UPTAKES (05 LEVEL)		2-54-0-E	52.42	131.05				4
5	3.3132	FAU ROOM		05-80-1-G	11.25	28.13				5
6	1.222	MISSILE EQPT ROOM		05-82-1-C	16.35	40.88				6
7	1.224	SPARE ROCKET STRM		05-82-3-A	2.05	5.13				7
8	1.116	ANTI SUBMARINE EQUIP ROOM		05-85-1-C	24.46	61.15				8
9	1.222	OBSERVATION STATION		05-89-1-C	2.39	5.98				9
10	3.315	ELEVATOR (05 LEVEL)		01-90-1-T	2.39	5.98				10
11	.				.	.				11
12	1.118	COMPUTER ROOM		04-54-1-C	44.02	110.05				12
13	2.123	CPD TOILET (58-60)		04-58-3-L	3.24	8.10				13
14	3.315	ELEVATOR (04 LEVEL)		1-58-3-T	2.21	5.53				14
15	1.224	SPARE ROCKETS		04-60-1-A	1.65	4.13				15
16	1.222	OBSERVATION STATION		04-61-1-C	3.30	8.25				16
17	3.700	PASSAGE		04-58-1-L	46.51	116.28				17
18	1.115	RADAR ROOM NO. 1		04-63-1-C	51.00	127.50				18
19	3.640	VOID (04 LEVEL)		04-71-1-V	3.00	7.50				19
20	3.260	UPTAKES (04 LEVEL)		2-54-0-E	52.80	132.00				20
21	3.640	VOID (04 LEVEL)		04-80-1-V	3.00	7.50				21
22	3.700	PASSAGE		04-76-1-L	37.11	92.78				22
23	1.115	RADAR ROOM NO. 2		04-81-3-C	51.00	127.50				23
24	1.316	METEOROLOGY ROOM		04-89-1-C	7.92	19.80				24
25	2.133	CREW TOILET		04-90-1-L	4.20	10.55				25

2-6  
04 LEVEL





PROGRAM		PROGRAMMER	CODE OFFICE	DATE	SHEET ④ of				
TYPE WORK		REMARKS		TYPE WORK COMPLETED BY	DATE COMPLETED				
<input type="checkbox"/> FLIGHT LUNCH <input type="checkbox"/> OTHER									
LINE	STATEMENT	FORTTRAN STATEMENT		AREA	VOL	CODE	IDENTIFICATION	SHIP	LINE
NO.	TAGGART NO.	COMPARTMENT NAME	COMPT NO.				SEQUENCE	NO.	
1	1.611	ADMIRALS CABIN	02-59-3-L	10.73	27.89				1
2	1.613	WR & WC	02-62-3-L	3.65	9.50			ISCS	2
3	3.315	ELEVATOR (02 LEVEL)	1-58-3-T	2.21	5.75				3
4	3.700	PASSAGE	02-58-1-T	19.02	49.44				4
5	2.112	COMMANDERS LOUNGE	02-60-1-L	11.13	28.94				5
6	2.111	COMMANDERS CABIN	02-64-1-L	11.09	28.84				6
7	2.113	WR & WC	02-62-1-L	3.65	9.50				7
8	1.611	CHIEF OF STAFF SR	02-66-3-L	11.38	29.59				8
9	1.613	WR & WC	02-64-3-L	3.18	8.27				9
10	3.700	PASSAGE	02-66-1-L	30.64	79.65				10
11	3.260	UPTAKES (02 LEVEL)	2-54-0-E	79.20	205.92				11
12	3.700	PASSAGE	02-78-1-L	43.09	112.03				12
13	2.231	POSIMETRY RM	02-83-1-L	2.58	6.71				13
14	3.134	DECONTAMINATION SPACE	02-83-3-L	20.89	54.32				14
15	3.134	DRESSING AREA	02-86-1-L	7.46	19.40				15
16	3.700	PASSAGE	02-89-3-L	1.21	3.15				16
17	1.3171	AIR OPERATIONS OFFICE	02-89-1-Q	10.15	26.38				17
18	3.315	ELEVATOR (02 LEVEL)	01-90-1-T	2.39	6.21				18
19	2.133	WR & WC	02-91-1-L	3.71	9.65				19
20									20
21	1.313	FLIGHT BRIEFING ROOM	02-92-3-C	19.03	49.47				21
22	2.410	FLIGHT CREW SHELTER	02-92-1-L	19.84	51.58				22
23	3.133	FIRE STATION	02-96-1-Q	8.97	23.33				23
24	3.700	PASSAGE	02-98-3-L	1.15	3.00				24
25	1.365	AIRCRAFT REFUELING STATION	02-98-1-K	2.31	6.00				25

2-6

6.4 36.94

16706  
370

6.4 +6590

PROGRAM: 02 LEVEL CONT'D - 01 LEVEL  
 PROGRAMMER: W. GARZKE  
 CODE OFFICE: X-2916  
 DATE: 16336  
 SHEET 5 of 5  
 REMARKS: Green Storage  
 TYPE WORK COMPLETED BY: DATE COMPLETED:

01 LEVEL

2-6

LINE	TAGGART NO.	COMPARTMENT NAME	FORTRAN STATEMENT	COMPT NO.	AREA	VOL	CODE	IDENTIFICATION	SHIP NO	LINE																																																												
											1	2	3	4	5	6	7	8	9	10	11	12	13	14	15	16	17	18	19	20	21	22	23	24	25	26	27	28	29	30	31	32	33	34	35	36	37	38	39	40	41	42	43	44	45	46	47	48	49	50	51	52	53	54	55	56	57	58	59	60
1	1.322	FLIGHT DECK		02-	4140.79	0.00				1																																																												
2										2																																																												
3	2.313	GENERAL STORES		01- K-2-A	36.18	195.29				3																																																												
4	1.282	LUBRICANT STORAGE - ARMAMENT		01- K-4-A	38.06	194.92				4																																																												
5	2.325	P.O. BAGGAGE STRM		01- B-2-A	33.60	110.87				5																																																												
6	2.325	OFFICERS BAGGAGE STRM		01- B-1-A	32.89	108.54				6																																																												
7	3.523	BOSUNS STOREROOM (P)		01- 2-2-A	24.92	82.22				7																																																												
8	3.523	BOSUNS STOREROOM (S)		01- 2-1-A	24.92	82.22				8																																																												
9	3.523	BOATSWAINS LKR (P)		01- 5-2-A	25.14	82.97				9																																																												
10	3.523	BOATSWAINS LKR (S)		01- 5-1-A	25.48	84.09				10																																																												
11	3.700	PASSAGE		01- K-0-L	15.75	66.93				11																																																												
12	3.700	PASSAGE		01- B-0-L	27.50	90.75				12																																																												
13	3.321	ANCHOR HANDLING AREA		01- 7-0-Q	164.89	544.14				13																																																												
14	2.132	CANTEEN		01- 18-5-L	2.78	9.18				14																																																												
15	3.700	PASSAGE		01- 18-3-L	1.34	4.44				15																																																												
16	3.315	WINE ELEVATOR (01 LEVEL)		3- 18-1-T	1.34	4.44				16																																																												
17	2.217	SHIP STORE		01- 17-2-L	13.30	43.89				17																																																												
18	2.132	CREW MESS ROOM		01- 16-0-L	203.89	672.82				18																																																												
19	2.255	LIBRARY		01- 26-1-L	10.26	33.86				19																																																												
20	3.700	PASSAGE		01- 26-3-L	2.81	9.28				20																																																												
21	3.700	PASSAGE		01- 28-2-L	2.70	8.89				21																																																												
22	3.700	PASSAGE (P)		01- 28-0-L	94.87	313.08				22																																																												
23	2.229	SCULLERY		01- 30-2-L	21.34	70.42				23																																																												
24	3.315	DUMBWAITER (01 LEVEL)		4- 32-2-L	3.40	11.22				24																																																												
25	2.255	CREW WR & WC		01- 33-1-L	16.27	53.68				25																																																												







PROGRAM: **01 LEVEL CONT'D - HANGAR DECK** PROGRAMMER: CODE OFFICE: DATE: SHEET **(9)** of

TYPE WORK COMPLETED BY: DATE COMPLETED:

REMARKS:

*Old*

LINE	TAGGART NO.	COMPARTMENT NAME	FORTRAN STATEMENT	COMPT NO.	AREA	VOL	CODE	IDENTIFICATION	SHIP NO	LINE																																																																																									
											1	2	3	4	5	6	7	8	9	10	11	12	13	14	15	16	17	18	19	20	21	22	23	24	25	26	27	28	29	30	31	32	33	34	35	36	37	38	39	40	41	42	43	44	45	46	47	48	49	50	51	52	53	54	55	56	57	58	59	60	61	62	63	64	65	66	67	68	69	70	71	72	73	74	75	76	77	78	79	80	81	82	83	84	85	86	87	88	89
1	3.439	PHOTO LABORATORY & DARK ROOM		01-138-2-L	17.82	58.81				1																																																																																									
2	1.222	MISSILE EQPT ROOM		01-139-2-L	9.61	31.73				2																																																																																									
3	2.248	POST OFFICE		01-143-6-L	5.94	19.60				3																																																																																									
4	3.354	SHORESIDE POWER CONNECTION		01-146-2-	5.28	17.42				4																																																																																									
5	2.211	ADMINISTRATION OFFICE & SAFE		01-143-4-G	25.30	83.49				5																																																																																									
6	1.212	DARDO GUNFIRE CNTRL		01-143-2-C	15.73	51.91				6																																																																																									
7	3.700	PASSAGE (PORT/FRS 98-136)		01-98-0-L	87.90	307.29				7																																																																																									
8										8																																																																																									
9	3.523	BOSUNS STOREROOM		1-4-0-L	48.08	313.28				9																																																																																									
10	3.523	BOSUNS STOREROOM (P)		1-3-4-A	13.20	102.99				10																																																																																									
11	3.523	BOSUNS STOREROOM (S)		1-3-1-A	26.95	122.44				11																																																																																									
12	3.700	ACCESS		1-3-2-L	13.75	41.25				12																																																																																									
13	3.3182	FAN ROOM		1-8-2-G	35.64	199.01				13																																																																																									
14	2.311	DRY PROVISION STRM		1-8-1-A	16.75	90.99				14																																																																																									
15	1.284	WEAPONS OFFICE		1-13-1-Q	15.00	67.33				15																																																																																									
16	3.321	ANCHOR WINDLASS ROOM		1-8-0-A	66.44	199.32				16																																																																																									
17	3.700	PASSAGE		1-16-0-L	105.43	319.48				17																																																																																									
18	2.241	LAUNDRY		1-22-2-Q	28.63	85.89				18																																																																																									
19	2.241	PRESSING		1-17-4-Q	28.44	85.32				19																																																																																									
20	2.241	SOILED LINEN LOCKER		1-26-2-A	9.68	29.04				20																																																																																									
21	2.241	CLEAN LINEN LOCKER		1-17-2-A	13.35	40.05				21																																																																																									
22	3.315	WINE ELEVATOR (HANGAR DECK)		3-18-1-T	1.34	4.02				22																																																																																									
23	3.140	OFFICE		1-17-1-G	22.79	68.37				23																																																																																									
24	1.372	WEAPONS ELEVATOR (HANGAR DECK)		4-22-2-T	7.04	21.12				24																																																																																									
25	1.3711	TORP & MISSILE PREP		1-22-1-M	24.09	72.27				25																																																																																									

HANGAR DECK  
2-6





PROGRAM		PROGRAMMER	CODE OFFICE	DATE	SHEET (II) of	
TAGGART NO.		COMPARTMENT NAME	FORTTRAN STATEMENT	COMPT NO.	AREA	VOL
1	1.342	AVIATION ENGINE SHOP		1-61-2-Q	30.03	90.09
2	1.343	HELD ELEC WKSHP & LAB		1-61-4-Q	61.11	183.33
3	3.521	STOREROOM		1-72-2-A	1.98	5.94
4	3.423	BATTERY CHARGING ROOM		1-74-4-Q	8.36	25.08
5	1.343	OFFICR ELECTRONICS LAB		1-74-2-Q	10.34	31.02
6	3.421	ELEC & ELCTRNC WKSHP (SHIP)		1-76-2-Q	29.33	87.99
7	3.3132	FAN ROOM		1-81-4-Q	26.03	78.09
8	3.133	<b>CO 2 FIRE FIGHTING STATION</b>		1-81-2-Q	10.18	30.54
9	1.121	ELECTRONICS WKSHP		1-86-4-Q	9.47	28.41
10	1.314	FLIGHT OFF & SEC MATRLS		1-86-2-Q	21.89	65.67
11	2.133	WR & WC		1-89-2-L	2.40	7.20
12	1.351	EQUIPMENT STORAGE		1-91-2-A	14.58	43.74
13	3.700	PASSAGE (P)		1-54-2-L	132.66	409.15
14	3.260	AFT AIR INTAKE (HANGAR DECK)		2-92-2-E	38.28	117.32
15	3.260	FWD AIR INTAKE ( )		2-85-3-E	34.86	107.06
16	3.315	ELEVATOR (HANGAR DECK)		1-58-1-T	2.30	6.90
17	3.315	ELEV MACH ROOM		1-60-1-Q	4.68	14.04
18	3.521	STOREROOM		1-60-3-A	5.77	17.31
19	3.260	FWD UPTAKE (HANGAR DECK)		2-54-0-E	48.40	145.20
20	3.140	OFF OF DOCUMENTS & STAT		1-71-1-Q	14.44	43.32
21	1.321	HANGAR OFFICERS OFFICE		1-74-1-Q	9.90	29.70
22	1.321	HANGAR CPO OFFICE		1-75-1-Q	11.14	33.42
23	3.334	CENTRAL TELEPHONE		1-75-3-Q	11.14	33.42
24	3.260	AFT UPTAKE (HANGAR DECK)		2-85-3-E	54.84	164.52
25	3.700	PASSAGE (S)		1-54-1-L	104.99	327.50

2-6



*Set*

FATSIS x2915

PROGRAM HANGAR DECK CONT'D - 2ND DECK PROGRAMMER CODE OFFICE DATE SHEET 13 of TYPE WORK COMPLETED BY DATE COMPLETED

L I N E	TAGGART NO.	COMPARTMENT NAME	FORTRAN STATEMENT	COMPT NO.	AREA	VOL	IDENTIFICATION	
							SHIP	
1	1.21A	40 MM MAGAZINE		1-14E-0-M	32.86	90.37		
2	3.531	BOAT STOWAGE PLATF		1-130-1-A	59.57	0.00		
3	3.531	BOAT STOWAGE PLATF		1-130-2-A	59.57	0.00		
4	3.322	AFT MANEUVERING AREA		1-142-0-Q	268.06	0.00		
5	1.331	FWD HELO ELEVATOR		1-2E-1-T	163.42	1029.55		
6	1.321	HANGAR (EXCL. ELEVS.)		1-36-0-Q	1364.58	8596.85		
7	1.331	AFT HELO ELEVATOR		1-102-1-T	165.11	1040.19		
8	. 2ND DECK			- - -	.	.		
9	1.331	FWD HELO ELEV PIT		1-2E-1-T	0.00	163.42		
10	1.331	AFT HELO ELEV PIT		1-102-1-T	0.00	165.11		
11	3.523	BOSUNS STOREROOM		2- E-0-A	25.58	166.96		
12	3.521	STOREROOM		2- 12-2-A	20.56	92.51		
13	.	STOREROOM		2- 12-1-A	23.07	98.48		
14	.	STOREROOM		2- 17-2-A	20.35	94.33		
15	.	STOREROOM		2- 17-1-A	30.94	123.31		
16	3.700	ACCESS TRUNK		2- 16-2-L	12.21	36.63		
17	3.315	WINE ELEVATOR (2ND DECK)		3- 17-1-T	1.34	4.02		
18	2.311	DRY PROVISIONS STRM (P)		2- 22-2-A	37.18	152.89		
19	2.311	DRY PROVISIONS STRM (S)		2- 22-1-A	30.36	115.19		
20	1.372	AMMUNITION ELEVATOR (2ND DECK)		4- 22-2-T	7.04	21.12		
21	3.140	LOGISTICS OFFICE		2- 28-2-G	27.83	111.21		
22	3.700	PASSAGE		2- 26-0-L	21.48	64.44		
23	3.521	STOREROOM		2- 29-1-A	6.26	12.52		
24	3.313Z	FAN ROOM		2- 28-1-G	25.83	68.93		
25	.	DRY PROVISIONS STRM		2- 26-1-A	11.33	45.96		

JCS

PROGRAM: **2ND DECK CONT'D** ✓  
 PROGRAMMER: \_\_\_\_\_ CODE OFFICE: \_\_\_\_\_ DATE: \_\_\_\_\_  
 TYPE WORK COMPLETED BY: \_\_\_\_\_ DATE COMPLETED: \_\_\_\_\_  
 SHEET **15** of \_\_\_\_\_

L I N E	TAGGART NO.	COMPARTMENT NAME	FORTRAN STATEMENT	COMPT NO.	AREA	VOL	IDENTIFICATION
							SHIP
1	3.521	STOREROOM		2-58-2-A	5.50	16.50	ISCS
2	3.521	INERT GAS CYL STRM		2-60-2-A	7.66	30.03	
3	3.700	(2) ACCESS TRUNKS (FR 61-65)		2-61-2-T	10.96	56.28	
4	3.521	GAS CYL STRM		2-65-2-A	5.03	24.03	
5	3.700	PASSAGE		2-57-1-L	14.70	44.09	
6	3.140	(2) TECH OFFICES (FR 64-66)		2-64-2-Q	16.94	50.82	
7	3.3132	FAN ROOM		2-63-2-Q	12.83	38.48	
8	3.3132	FAN ROOM		2-66-1-Q	15.02	50.18	
9	3.521	STOREROOM		2-71-3-Q	3.30	12.07	
10	3.521	STOREROOM		2-70-2-Q	4.40	20.54	
11	3.700	ACCESS TRUNK		2-71-2-T	6.25	33.67	
12	3.700	ACCESS TRUNK		2-71-1-T	5.00	15.00	
13	2.111	OFFICERS SR (FR 66-70)		2-66-0-L	10.93	54.87	
14	2.113	WR, WC & SH (FR 66-67)		2-66-0-L	3.23	16.98	
15	2.111	OFFICERS SR (FR 72-76) (P)		2-72-2-L	18.65	74.62	
16	2.111	OFFICERS SR (FR 72-76) (S)		2-72-1-L	16.50	56.05	
17	3.700	PASSAGE		2-69-0-L	24.53	73.59	
18	2.113	(3) WR, WC & SH (FR 66-76)		2-66-0-L	10.14	30.41	
19	2.113	(5) WC & SH (FR 66-76)		2-66-0-L	20.63	61.89	
20	2.113	(9) WR IN SR (FR 66-76)		2-66-0-L	11.17	33.51	
21	2.111	(10) OFFICERS SR (FR 66-76)		2-66-0-L	119.97	359.91	
22	3.120	CENTRAL PROP OPER CENTER		2-76-0-E	54.78	164.34	
23	3.3132	FAN ROOM		2-76-1-Q	17.60	52.80	
24	3.810	GRUPPI CONTINUITA		2-76-5-Q	13.56	45.86	
25	3.700	ACCESS TRUNK (FR 76-80)		2-76-4-L	10.21	67.84	

PROGRAM: 2<sup>ND</sup> DECK CONT'D PROGRAMMER: \_\_\_\_\_ CODE/OFFICE: \_\_\_\_\_ DATE: \_\_\_\_\_ SHEET (16) of \_\_\_\_\_

TYPE WORK:  PLANT/BUCK  OTHER \_\_\_\_\_ REMARKS: \_\_\_\_\_ TYPE WORK COMPLETED BY: \_\_\_\_\_ DATE COMPLETED: \_\_\_\_\_

L I N E	TAGGART NO.	COMPARTMENT NAME	FORTRAN STATEMENT	COMPT NO.	AREA	VOL	IDENTIFICATION	
							SHIP	NO.
1	3.700	ACCESS TRUNK		2-	76-3-L	7.95	23.85	
2	2.111	OFFICERS SR (FR 81-84)		2-	81-0-L	10.29	32.18	
3	2.113	WR WC & SH		2-	84-9-L	4.46	14.70	
4	2.111	OFFICERS SR (FR 81-85)		2-	81-0-L	11.66	64.72	
5	3.700	PASSAGE		2-	80-0-L	26.29	78.87	
6	2.113	WR WC & SH (FR 85-86)		2-	85-6-L	2.92	16.19	
7	2.113	(6) WR WC & SH (FR 76-86)		2-	76-0-L	22.67	68.01	
8	2.113	WC & SH (FR 85-86)		2-	85-2-L	4.13	12.39	
9	2.113	(12) WR IN SRS (FR 81-82)		2-	70-0-L	2.20	6.60	
10	2.111	(8) OFFICERS SRS (FR 76-86)		2-	76-0-L	82.07	246.21	
11	3.260	AFT UPTAKE		2-	85-1-E	92.22	284.52	
12	3.700	ACCESS TRUNK		2-	86-0-F	11.99	80.42	
13	3.640	VOID		2-	92-8-V	7.26	66.20	
14	3.700	ACCESS TRUNK		2-	89-1-T	2.52	7.56	
15	3.260	AFT AIR INTAKE		2-	92-6-E	14.12	42.36	
16	3.700	ACCESS TRUNK		2-	89-1-T	2.55	7.65	
17	3.700	ACCESS TRUNK		2-	93-5-T	2.75	8.25	
18	3.700	PASSAGE		2-	89-0-L	28.95	86.85	
19	3.521	GAS CYL STOREROOM		2-	86-6-A	2.93	8.79	
20	2.113	(2) WR WC & SH (FR 86-89)		2-	86-0-L	9.57	28.71	
21	2.113	(6) WC & SH (FR 86-98)		2-	86-0-L	25.73	77.20	
22	2.113	(8) WR IN SRS (FR 86-98)		2-	86-0-L	9.08	27.23	
23	3.521	INERT GAS CYL STOREROOM		2-	86-1-L	6.05	18.15	
24	3.640	VOIDS (2)		2-	92-4-V	2.86	8.58	
25	2.111	(10) OFFICERS SRS (FR 86-98)		2-	86-0-L	119.61	358.78	

PROGRAM <b>2<sup>ND</sup> DECK CONT'D</b>	PROGRAMMER	CODE OFFICE	DATE	SHEET <b>(17)</b> of	
TYPE WORK <input type="checkbox"/> REVISION <input type="checkbox"/> OTHER	REMARKS	TYPE WORK COMPLETED BY			DATE COMPLETED

LINE	TAGGART NO.	COMPARTMENT NAME	FORTRAN STATEMENT	COMPT NO.	AREA	VOL	IDENTIFICATION	
							SHIP	SHIP
1	3.700	ACCESS TRUNK (FR 103-105)		2-103-2-T	5.63	32.38		
2	3.521	STORE ROOM		2-102-4-A	3.30	17.39		
3	3.521	STORE ROOM		2-98-7-A	10.84	35.76		
4	3.521	STORE ROOM (FR 102-108)		2-102-3-A	42.05	96.81		
5	2.111	OFFICERS SR (FR 104-108)		2-104-6-L	12.54	56.25		
6	3.3132	FAN ROOM		2-102-1-Q	29.43	60.00		
7	3.700	ACCESS TRUNK		2-99-1-T	8.53	25.58		
8	<del>2.258</del>	STORE ROOM		2-98-5-A	4.95	14.85		
9	2.258	CHURCH		2-98-0-L	15.73	47.19		
10	2.111	CHAPLAINS SR		2-98-1-L	10.40	31.19		
11	2.113	(3) WR WC & SH (FR 98-103)		2-98-3-L	10.46	31.37		
12	2.113	(3) WC & SH		2-98-6-L	12.54	37.62		
13	2.113	(6) WR IN SRS (FR 98-108)		2-98-4-L	6.60	19.80		
14	2.111	OFFICERS SR (FR 98-103)		2-98-0-L	16.02	45.81		
15	2.111	(6) OFFICER SRS (FR 98-108)		2-98-0-L	61.44	184.31		
16	3.700	PASSAGE		2-100-0-L	26.35	79.05		
17	3.700	ACCESS TRUNK (FR 108-115)		2-108-8-T	15.10	95.45		
18	1.331	AFT FLIGHT ELEV MACH		2-108-1-Q	37.40	85.16		
19	3.521	STORE ROOM		2-113-3-A	50.33	114.07		
20	2.111	OFFICERS SR (FR 114-118)		2-114-0-L	18.93	75.64		
21	3.521	STORE ROOM		2-108-6-A	3.60	10.80		
22	3.700	PASSAGE		2-112-0-L	18.37	55.11		
23	3.3132	FAN ROOM		2-108-1-Q	25.08	54.34		
24	3.521	STORE ROOM		2-113-1-A	17.33	40.88		
25	2.113	(4) WC & SH (FR 108-118)		2-108-0-L	17.44	52.31		

PROGRAM 2ND DECK CONT'D

PROGRAMMER \_\_\_\_\_ CODE/OFFICE \_\_\_\_\_ DATE \_\_\_\_\_ SHEET 18 of \_\_\_\_\_

TYPE WORK  LEAFLET  OTHER \_\_\_\_\_ REMARKS \_\_\_\_\_ TYPE WORK COMPLETED BY \_\_\_\_\_ DATE COMPLETED \_\_\_\_\_

LINE NO.	TAGGART NO.	COMPARTMENT NAME	FORTRAN STATEMENT	COMPT NO.	AREA	VOL	IDENTIFICATION	
							SHIP	STATION
1	2.113	(6) WR IN SRS (FR 108-118)		2-108-0-L	7.00	20.97		
2	2.111	(5) OFFCRS SRS (FR 108-118)		2-108-0-L	60.71	182.13		
3	3.700	ACCESS TRUNK (FR 118-125)		2-118-8-L	18.88	109.62		
4	3.521	STOZER ROOM		2-124-8-A	13.94	63.44		
5	3.3132	FAN ROOM (FR 118-124)		2-118-7-G	21.29	67.93		
6	2.111	OFFCRS SR (FR 124-127)		2-124-7-L	12.81	42.70		
7	2.113	WC & SH (FR 127-128)		2-127-3-L	4.51	15.02		
8	3.700	PASSAGE		2-123-0-L	18.98	56.93		
9	1.3721	AMMUNITION ELEVATOR (2ND DECK)		4-119-1-T	4.95	14.85		
10	3.700	ACCESS TRUNK		2-121-1-T	2.50	7.50		
11	2.113	WR, WC & SH (FR 127-128)		2-127-1-L	3.63	10.89		
12	2.113	(7) WC & SH (FR 118-128)		2-118-0-L	26.03	78.08		
13	2.113	(9) WR IN SRS (FR 118-128)		2-118-0-L	10.52	31.53		
14	2.111	(9) OFFCR SRS (FR 118-128)		2-118-0-L	123.87	367.90		
15	3.700	ACCESS TRUNK (FR 128-133)		2-128-8-T	18.70	91.36		
16	2.113	(2) P.O. SRS (FR 133-140)		2-133-0-L	24.26	120.73		
17	2.131	P.O. SR (FR 128-132)		2-133-7-L	17.27	58.32		
18	2.133	SHOWERS		2-132-1-L	7.10	23.98		
19	3.3132	FAN ROOM		2-134-5-G	20.47	68.59		
20	3.700	ACCESS TRUNK		2-135-1-T	7.06	21.17		
21	3.700	PASSAGE		2-128-0-L	36.50	115.50		
22	3.521	(4) STRMS (FR 128-140)		2-138-0-A	9.63	28.88		
23	2.133	WR & WC		2-138-3-L	8.97	26.90		
24	2.131	(115) P.O. SRS (FR 128-140)		2-128-0-L	144.93	434.71		
25	3.700	PASSAGE (FR 140-146)		2-140-0-L	82.00	285.22		

2ND DECK CONT'D - 1ST PLATFORM

PROGRAMMER

CODE OFFICE

DATE

SHEET 19 of

TYPE WORK

LEAFLET  OTHER

REMARKS

TYPE WORK COMPLETED BY

DATE COMPLETED

L I N E	TAGGART NO.	COMPARTMENT NAME	FORTRAN STATEMENT	COMPT NO.	AREA	VOL	IDENTIFICATION	
							SHIP	OBJECT
1	3.52	STOREROOM		2-140-1-A	20.13	72.70		ISCS
2	3.3132	FAN ROOM		2-148-2-G	27.17	137.32		
3	3.522	CPO ELEC. STRM		2-142-2-A	47.51	155.21		
4	1.335	CPO FLIGHT STRM		2-142-1-A	42.07	138.89		
5	3.523	ROPE STOREROOM		2-146-1-A	27.01	106.08		
6	1.1	1ST PLATFORM		-	.	.		
7	2.322	CREW WINE STRM		3-12-0-A	31.49	93.04		
8	2.322	CPO WINE STRM		3-17-4-A	11.00	35.37		
9	2.322	OFFICERS WINE STRM		3-17-3-A	16.34	49.25		
10	3.700	ACCESS TRUNK		3-17-0-A	11.55	30.03		
11	3.315	WINE ELEVATOR (3RD DECK)		3-17-1-T	1.54	4.00		
12	3.521	STOREROOM		3-18-1-A	4.62	12.01		
13	1.372	MUNITIONS ELEVATOR (3RD DECK)		4-22-2-T	6.88	17.88		
14	3.700	ACCESS TRUNK		3-27-0-T	16.50	42.90		
15	1.371	TORPEDO STRM		3-22-2-A	44.22	134.66		
16	1.371	AIRCRAFT MISSILE STRM		3-22-1-A	62.37	181.85		
17	3.315	DUMBWAITER (3RD DECK)		4-32-2-T	3.30	8.58		
18	3.700	ACCESS AND PASSAGE		3-33-2-L	28.88	75.08		
19	2.311	FLOUR STOREROOM		3-32-2-A	35.23	104.27		
20	2.311	CREW FOOD STRM		3-32-1-A	69.52	197.23		
21	2.311	OFFICERS FOOD STRM		3-38-2-A	42.14	114.22		
22	2.311	CPO FOOD STRM		3-40-2-A	39.86	111.58		
23	2.131	P.O. SR (FR 44-49)		3-44-4-L	12.65	40.12		
24	3.521	STOREROOM (FR 49-50)		3-49-2-L	3.03	9.59		
25	2.324	OIL SKIN LOCKER		3-50-4-A	4.29	14.47		



PROGRAM <b>1<sup>ST</sup> PLATFORM CONT'D</b>	PROGRAMMER	CODE/OFFICE	DATE	SHEET <b>(20)</b> of
TITLE WORK <input type="checkbox"/> LEAFLET <input type="checkbox"/> OTHER	REMARKS		TYPE WORK COMPLETED BY	
			DATE COMPLETED	

L I N E	TAGGART NO.	COMPARTMENT NAME	FORTRAN STATEMENT	COMPT NO.	AREA	VOL	IDENTIFICATION
							SHIP
1	2.325	SEABAG STOREROOM (P)		3- 52-2-A	7.04	21.44	JSCS
2	2.131	P.O. SR (FR 44-50)		3- 44-3-L	19.08	60.51	
3	2.324	OILSKIN LOCKER		3- 50-1-A	1.87	8.18	
4	2.325	SEABAG STOREROOM (S)		3- 52-1-A	4.62	15.14	
5	3.700	ACCESS TRUNK		3- 47-2-T	10.56	27.46	
6	3.700	ACCESS TRUNK		3- 49-1-T	7.20	18.72	
7	3.700 2.132	PASSAGE LOUNGE		3- 44-8-L	14.52 22.72	37.75 59.87	
8	3.113	FWD GYRO ROOM		3- 50-1-Q	9.46	24.60	
9	2.131	(5) P.O. SRS (FR 44-54)		3- 44-0-L	80.20	208.50	
10	2.133	WR WC & SH		3- 50-3-L	24.81	64.49	
11	3.334	ELEC CONTROL RM (FR 63-66)		3- 62-2-E	41.23	110.42	
12	3.334	ELEC CONTROL RM (FR 86-89)		3- 86-2-E	42.75	113.72	
13	2.121	(2) CPD SRS (FR 66-73) (P)		3- 66-6-L	24.35	68.22	
14	2.121	(2) CPD SRS (FR 66-73) (S)		3- 66-5-L	20.20	56.74	
15	2.123	WR IN SR (FR 68-70)		3- 68-6-L	1.57	5.55	
16	2.123	(2) WR IN SR (FR 66-70)		3- 66-0-L	2.58	8.78	
17	3.700	ACCESS TRUNK (P)		3- 72-2-T	7.52	21.52	
18	3.700	ACCESS TRUNK (S)		3- 72-1-T	7.42	21.56	
19	3.521	STOREROOM (P)		3- 75-2-A	4.90	13.56	
20	3.521	STOREROOM (S)		3- 75-1-A	4.84	13.46	
21	3.700	PASSAGE		3- 69-0-A	34.21	88.95	
22	2.123	WC & SH (FR 66-72)		3- 66-2-L	20.46	53.20	
23	2.123	(10) WR IN SRS (FR 66-76)		3- 66-0-L	15.91	41.36	
24	2.121	(9) CPD SRS (FR 66-76)		3- 66-0-L	113.60	295.35	
25	2.324	OILSKIN LKR (FR 76-77)		3- 76-8-L	3.30	9.39	

PROGRAM <b>1<sup>ST</sup> PLATFORM CONT'D</b>	PROGRAMMER	CODE/OFFICE	DATE	SHIP OF <b>(2)</b>
TYPE WORK <input type="checkbox"/> LEAFLET <input type="checkbox"/> OTHER	REMARKS	TYPE WORK COMPLETED BY		DATE COMPLETED

L I N E	TAGGART NO.	COMPARTMENT NAME	FORTRAN STATEMENT	COMPT NO.	AREA	VOL	IDENTIFICATION
							SHIP
1	3.700	ACCESS TRUNK		3-77-2-T	11.45	31.36	ISCS
2	2.325	SEABAG STOREROOM		3-79-2-A	4.40	12.24	
3	3.3132	FAN ROOM (FR 81-86)		3-81-2-G	13.90	40.14	
4	3.521	STOREROOM (FR 76-77)		3-76-7-A	2.15	6.46	
5	3.700	ACCESS TRUNK (FR 77-79)		3-77-1-T	11.89	32.62	
6	2.121	(2) P.O. SRS (FR 79-86)		3-79-1-L	29.48	82.72	
7	2.325	SEABAG STOREROOM		3-78-1-A	3.30	8.58	
8	2.132	PASSAGE		3-76-0-L	13.64	35.46	
9	3.700	AFT GYRO ROOM		3-81-1-Q	11.55	30.03	
10	2.133	WR, WC & SH (FR 81-86)		3-81-3-Q	29.70	77.22	
11	2.324	OILSKIN LOCKER		3-76-5-A	3.91	10.15	
12	2.131	(7) P.O. SRS		3-76-0-L	103.84	269.99	
13	2.121	CPØ SR (FR 98-104)		3-98-0-L	19.17	55.96	
14	3.700	ACCESS TRUNK		3-105-2-T	10.11	27.86	
15	3.521	STOREROOM (FR 107-108)		3-107-2-A	4.66	13.12	
16	3.521	STOREROOM (FR 98-99)		3-98-5-A	4.22	11.92	
17	3.700	ACCESS TRUNK		3-99-1-T	9.69	27.43	
18	3.521	STOREROOM		3-101-1-A	5.09	14.93	
19	2.121	CPØ SR (FR 103-108)		3-103-1-L	19.36	55.70	
20	3.700	PASSAGE		3-103-0-L	22.46	58.40	
21	2.123	WC & SH (FR 104-108)		3-104-0-L	26.40	68.64	
22	2.123	(9) WR IN SRS (FR 98-108)		3-98-0-L	16.01	41.58	
23	2.121	(7) CPØ SRS (FR 98-108)		3-98-0-L	122.25	317.83	
24	3.521	STOREROOM (FR 108-109)		3-108-4-L	4.62	13.03	
25	3.700	ACCESS & PASSAGE		3-109-2-L	22.02	62.58	

PROGRAM <b>1ST PLATFORM CONT'D</b>	PROGRAMMER	COMD OFFICE	DATE	SHEET <b>(22)</b> of
TYPE WORK <input type="checkbox"/> LEY LUNCH <input type="checkbox"/> OTHER	REMARKS		TYPE WORK COMPLETED BY	
			DATE COMPLETED	

L I N E	TAGGART NO.	COMPARTMENT NAME	FORTRAN STATEMENT	COMPT NO.	AREA	VOL	IDENTIFICATION	
							SHIP	SEQUENCE
1	2.325	SEABAG STOREROOM		3-111-2-A	7.94	23.60	ISCS	
2	2.324	OILSKIN LKR (FR 117-118)		3-117-2-A	2.53	7.85		
3	2.325	SEABAG STOREROOM		3-108-7-A	5.28	17.14		
4	2.131	CREW SR (FR 111-118)		3-111-1-L	25.36	74.49		
5	2.700 2.132	PASSAGE LOUNGE		3-108-8-L	19.75	54.34		
6	3.700	ACCESS TRUNK (FR 109-112)		3-109-1-T	6.25	16.25		
7	2.324	OIL SKIN LOCKER		3-108-5-A	2.75	7.15		
8	2.133	WR, WC & SH (FR 114-118)		3-114-0-L	31.90	82.94		
9	2.131	(15) CREW SRS		3-108-0-L	105.11	273.28		
10	2.324	OILSKIN LKR (FR 118-119)		3-118-4-A	4.07	11.89		
11	3.700	ACCESS TRUNK		3-119-2-T	15.62	46.16		
12	2.131	CREW SR (FR 123-128)		3-123-2-L	12.49	40.09		
13	2.325	SEABAG STRM (FR 118-122)		3-118-6-A	6.05	21.16		
14	2.131	CREW SR (FR 122-128)		3-122-1-L	17.02	53.35		
15	1.372	MUNITIONS ELEVATOR (3RD DECK)		4-119-1-T	4.95	12.87		
16	3.700	(2) ACCESS TRUNKS (118/123)		3-118-1-T	12.62	32.81		
17	3.700 2.132	PASSAGE LOUNGE		3-122-0-L	20.13	52.34		
18	2.133	WR, WC & SH (FR 118-123)		3-118-0-L	34.38	89.38		
19	2.131	(5) CREW SRS (FR 118-128)		3-118-0-L	98.46	255.98		
20	2.325	SEABAG STOREROOM		3-128-4-L	9.49	29.61		
21	3.700	ACCESS TRUNK (FR 131-133)		3-131-2-L	5.90	18.79		
22	2.324	OILSKIN LOCKER		3-133-6-L	4.87	18.09		
23	2.131	P.O. SR (FR 136-140)		3-136-4-L	22.62	66.59		
24	2.131	P.O. SR (FR 128-132)		3-128-0-L	11.88	37.52		
25	2.325	SEABAG STOREROOM		3-132-2-A	2.64	10.37		