

U.S.S. NEW YORK-BB34

CORRECTED TO SUIT SHIP		
PLACE	DATE	APPROVED
PLAN ALTERED AT NAVY YARD, N.Y. TO AGREE WITH CHECKED BOOKLET REC'D. FROM NORFOLK NAVY YARD WITH LET. BB 34 51-3 (MOD-14) DEC. 22, '37	Feb 17, '38	<i>R. Stinchcomb</i> ASSISTANT DESIGN SUPERINTENDENT
PLAN ALTERED AT NAVY YARD, N.Y. TO AGREE WITH CHECKED BOOKLET REC'D. FROM NORFOLK NAVY YARD WITH LET. BB 34/51-3 (MOD) DEC. 24, '37	FEB. 14, 1940	<i>F. E. Haasler</i> ASSISTANT DESIGN SUPERINTENDENT
NORFOLK NAVY YARD	JAN 30 1942	
NORFOLK NAVY YARD	SEPT 1 1942	<i>J. P. Brown</i>

BOOKLET OF GENERAL PLANS

~~"RESTRICTED"~~

NOTE: IF COPY OF THIS BOOKLET IS DESTROYED OR CUSTODY CHANGED, THE YARD BY WHOM ISSUED SHOULD BE SO NOTIFIED.

NUMBER & ORDER OF PLANS	PAGE
COVER & TITLE PAGE	1
GENERAL INFORMATION & DATA	2
OUTBOARD PROFILE	3
INBOARD PROFILE	4
SUPER. DK., BRIDGES & PLATF'S.	5
MAIN DECK	6
SECOND DECK	7
HALF & BERTH DECK	8
THIRD DECK	9
FIRST PLATFORM	10
SECOND PLATFORM	11
HOLD	12
INNER BOTTOM	13

PREPARED AT	
NAVY YARD PUGET SOUND	
RETRACED FROM BOOKLET BU. C&R NO 139957 A- PREPARED IN THE OFFICE OF THE MANAGER AT NORFOLK NAVY YARD AFTER MAJOR ALTERATIONS.	
TRACED	<i>E. W. Bohmer</i> <i>H. A. Young</i>
CHECKED	<i>R. J. Rush</i>
SUPERVISOR	<i>R. E. Bailey</i>
CHIEF DRAFTSMAN	<i>H. J. Shaw</i> 3/7/35
DATE	3/7/35
APPROVED	<i>R. M. Wilson</i> COMDR. C.C. U.S.N. PLANNING OFFICER
BUC&R NO 139957	

ALTERATIONS			
NAVY YARD	DATE	DESCRIPTION	APPROVED
	1/1/34	RETRACED AND CORRECTED TO 1-8-35. REVISED TO CONFORM WITH BU. C&R LETTER NO 51-3-14 (R1). ENT /A2-11-(27) OF 24 JAN 1934.	<i>J. P. Brown</i>
P.S.N.Y.	4/5/36	CORRECTED TO 6/2/36. AA FIRE CONTROL STATION ADDED ON AA CONTROL PLATFORM. TORPEDO ACCESS TRUNK REMOVED BETWEEN MAIN & 2ND DECK. FR 53 & 54 PORT, WT 5th ADDED AT C.L. 3rd DECK ABAFT #2 BARBETTE. PYROTECHNIC STOWAGE ADDED IN CONNING TOWER SUPPORTS ON SUPERSTRUCTURE DECK. SEARCHLIGHT PLATFORM ON MAINMAST ENLARGED, AND OTHER MINOR CHANGES SHOWN.	<i>J. P. Brown</i>
NFK.	8/31/42	ADDED 20 1 1/2" 10 X 3" - 50 CAL. GUNS. CLIPPING ROOM, NO. OF BOATS CORRECTED, SALUTING GUNS REMOVED, SOME OF PORT HOLES WELDED SHUT, AND OTHER MINOR CHANGES AS SHOWN ON PLAN.	<i>J. P. Brown</i>

PRINCIPAL DIMENSIONS	
LENGTH BETWEEN PERPENDICULARS	565'-0"
PROJECTION FORWARD OF F.P.	7'-7 1/2"
PROJECTION AFT OF A.P.	0'-0"
LENGTH OVERALL	572'-7 1/2"
BREADTH EXTREME	106'-0 1/2"
D.W.L. ABOVE BASE LINE	28'-4 1/8"
SHAFTS INCLINE UP AND AFT AT AN ANGLE	0°-36'-34"
SHAFTS DIVERGE AT AN ANGLE WITH THE C OF SHIP	1°-8'-34"
SHAFTS C AT *89° FROM C OF SHIP	10'-0"
SHAFTS C AT *89° ABOVE THE BASE LINE	8'-0"
SHAFTS C AT *136° FROM C OF SHIP	14'-6"
SHAFTS C AT *136° ABOVE THE BASE LINE	10'-0"
SHAFTS RAKE UP .12766' PER FT. - SHAFTS RAKE OUT .23936' PER FT.	
SHAFTS C MEET FORD OF F.P.	183'-11 5/8"
SCREWS - CENTER FORD OF A.P.	24'-6"
STRUTS - MAIN C FORWARD OF A.P.	28'-11 1/2"
STRUTS - INTERMEDIATE C FORD OF A.P.	56'-0 5/16"
RUDDER - AXIS FORD OF A.P.	23'-0"
DISTANCE BETWEEN FRAMES	4'-0"

HEIGHTS ABOVE 28'6" W.L. (28'6" W.L. IS 28'4 3/8" ABOVE BASE LINE MOULDED)	
TOP OF TRUCKLIGHT FOREMAST	126'-0 1/2"
TOP OF FIRE CONTROL TOP FOREMAST	121'-6"
50 CAL. A.A. MACHINE GUN PLATFORM FOREMAST	111'-8 1/2"
MAIN BATTERY DIRECTOR STATION FOREMAST	111'-8 1/2"
SECONDARY BATTERY STATION FOREMAST	100'-0 1/2"
TOP OF TRUCK LIGHT MAINMAST	93'-0 1/2"
CENTER OF RANGE LIGHT FOREMAST	91'-3 1/2"
FUTTOCK PLATFORM FOREMAST	89'-2"
50 CAL. A.A. MACHINE GUN PLATFORM MAINMAST	76'-11 1/2"
CENTER OF MAST HEAD LIGHT FOREMAST	76'-1 1/2"
ANTI-AIRCRAFT CONTROL PLATFORM FOREMAST	64'-6 1/2"
SEARCHLIGHT PLATFORM MAINMAST	59'-5 1/4"
NAVIGATING BRIDGE FOREMAST	56'-0 1/2"
SEARCHLIGHT OPERATING PLATFORM MAINMAST	49'-2 1/4"

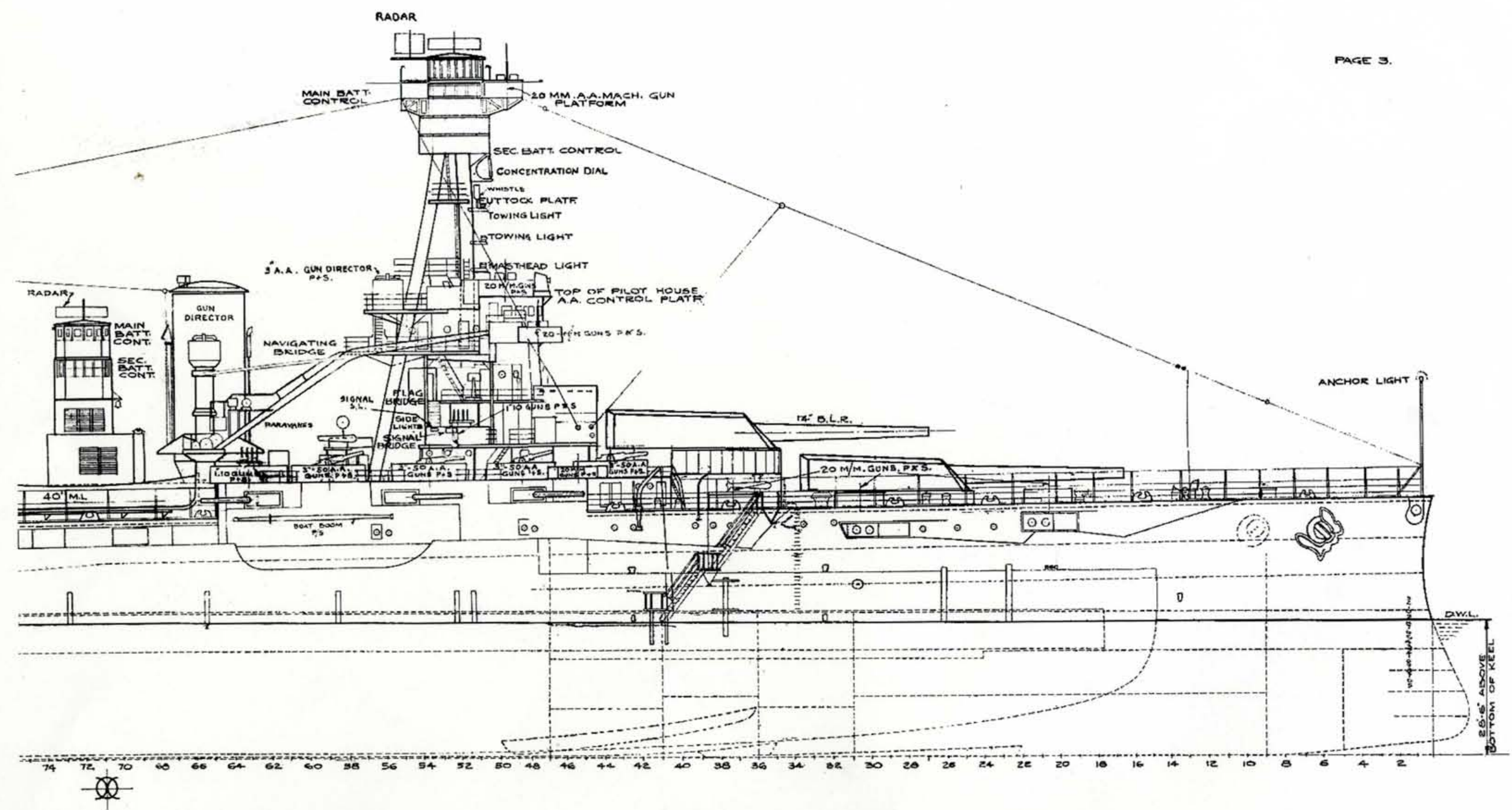
SMALL BOATS					
NO	TYPE	LOCATION	MEN		LIFTING WEIGHT
			EACH	TOTAL	
2	40 FT. MOTOR BOAT	FR. 66-76 SUPER. DK (S)	37	74	14793
1	40 FT. MOTOR BOAT (GIG)	FR. 67-77 SUPER. DK (S)	37	37	14753
1	50 FT. MOTOR LAUNCHES	FR. 66-76 MAIN DK.	180	360	25687
2	40 FT. MOTOR LAUNCHES	FR. 66-76 MAIN DK.	90	180	15685
1	26 FT. M. WHALE BOATS	FR. 69-76 MAIN DK.	24	48	4756
1	40 FT. ADM'L'S BARGE	FR. 67-77 SUPER. DK (S)			15600
1	14 FT. PUNTS	FR. 67-76 SUPER. DK.			782
2	30 FT. SAILING WHALE BOAT	FR. 91-98 MAIN DECK (S)	40	80	5300

U.S.S. NEW YORK
GENERAL INFORMATION & DATA
C. & R. NO 139957

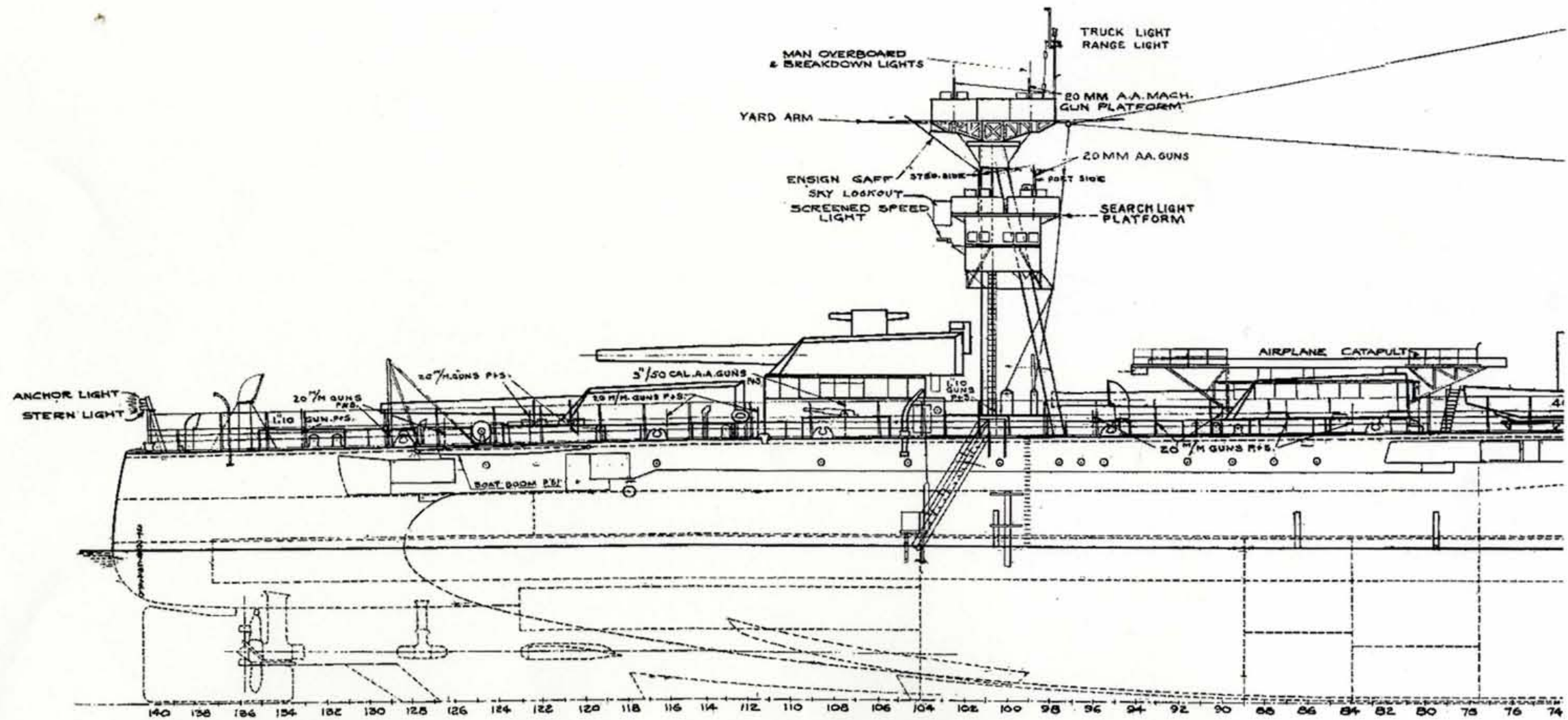
FIRE PLUGS														
PLUG NO	DECK	SIDE	FRAME	COMPT	PLUG NO	DECK	SIDE	FRAME	COMPT	PLUG NO	DECK	SIDE	FRAME	COMPT
1	2ND PLATFORM	S	35-36	A-35	32	SECOND DECK	S	18-19	A-125	63	MAIN DECK	S	63-64	WTHR DECK
2	1ST PLATFORM	S	26-27	A-50	33	SECOND DECK	S	40-41	A-127	64	MAIN DECK	P	76-77	WTHR DECK
3	1ST PLATFORM	S	26-27	A-50	34	SECOND DECK	P	35-36	A-127	65	MAIN DECK	S	76-77	WTHR DECK
4	1ST PLATFORM	S	40-41	A-56	35	SECOND DECK	S	47-48	CREW SPACE	66	MAIN DECK	P	91-92	WTHR DECK
5	1ST PLATFORM	S	40-41	A-56	36	SECOND DECK	P	47-48	CREW SPACE	67	MAIN DECK	S	91-92	WTHR DECK
6										68	MAIN DECK	P	106-107	WTHR DECK
7										69	MAIN DECK	S	106-107	WTHR DECK
8	1ST PLATFORM	P	77-78	A-34-P						70	MAIN DECK	S	121-122	WTHR DECK
9	1ST PLATFORM	S	77-78	A-34-S						71	SUPER. DECK	S	47-48	WTHR DECK
10	1ST PLATFORM	S	88-89	C-37						72	SUPER. DECK	P	47-48	WTHR DECK
11	1ST PLATFORM	S	88-89	C-37						73	SUPER. DECK	S	63-64	WTHR DECK
12	1ST PLATFORM	S	105-106	D-29	43	SECOND DECK	S	59-60	CREW SPACE	74	SUPER. DECK	P	62-63	WTHR DECK
13	1ST PLATFORM	S	105-106	D-29	44	SECOND DECK	P	59-60	CREW SPACE					
14	1ST PLATFORM	S	119-120	D-35	45	SECOND DECK	S	72-73	CREW SPACE					
15	1ST PLATFORM	S	119-120	D-35	46	SECOND DECK	P	72-73	CREW SPACE					
16	THIRD DECK	P	34-35	A-111	47	SECOND DECK	S	76-77	CREW SPACE					
17	THIRD DECK	S	49-50	A-117	48	SECOND DECK	P	76-77	CREW SPACE					
18	THIRD DECK	P	47-48	A-102	49	SECOND DECK	S	76-77	CREW SPACE					
19	THIRD DECK	S	58-59	B-101	50	SECOND DECK	P	76-77	CREW SPACE					
20	THIRD DECK	P	61-62	B-100	51	SECOND DECK	S	92-93	CREW SPACE					
21	THIRD DECK	S	77-78	C-101	52	SECOND DECK	P	92-93	CREW SPACE					
22	THIRD DECK	P	77-78	C-102	53	SECOND DECK	S	106-107	CREW SPACE					
23	THIRD DECK	S	91-92	C-101	54	SECOND DECK	P	106-107	CREW SPACE					
24	THIRD DECK	P	91-92	C-102	55	SECOND DECK	S	122-123	CREW SPACE					
25	THIRD DECK	S	104-105	D-109	56	MAIN DECK	S	13-14	WTHR DECK					
26	THIRD DECK	P	104-105	D-108	57	MAIN DECK	S	13-14	WTHR DECK					
27	BERTH DECK	S	123-124	D-111	58	MAIN DECK	S	34-35	WTHR DECK					
28	HALF DECK	P	18-19	A-122	59	MAIN DECK	S	34-35	WTHR DECK					
29	HALF DECK	S	34-35	A-123	60	MAIN DECK	P	52-53	WTHR DECK					
30	HALF DECK	P	36-37	A-125	61	MAIN DECK	S	52-53	WTHR DECK					
31	SECOND DECK	S	13-14	A-125	62	MAIN DECK	P	62-63	WTHR DECK					

RECAPITULATION OF FIRE PLUGS		
2ND PLATFORM		1
1ST PLATFORM		12
THIRD DECK		11
BERTH DECK		1
HALF DECK		3
SECOND DECK		19
MAIN DECK		15
SUPERSTRUCTURE DECK		4
TOTAL		66

COMPLEMENT	
COMMANDING OFFICER	1
WARDROOM OFFICERS	44
JUNIOR OFFICERS	27
WARRANT OFFICERS	10
TOTAL OFFICERS	84
SEAMEN BRANCH	955
ARTIFICER	104
ENGINE ROOM	246
SPECIAL	81
COMMISSARY	25
MESSMEN	38
AVIATION	21
MARINES	63
TOTAL CREW & MARINES	1593
TOTAL OFFICERS	84
TOTAL ON BOARD	1617

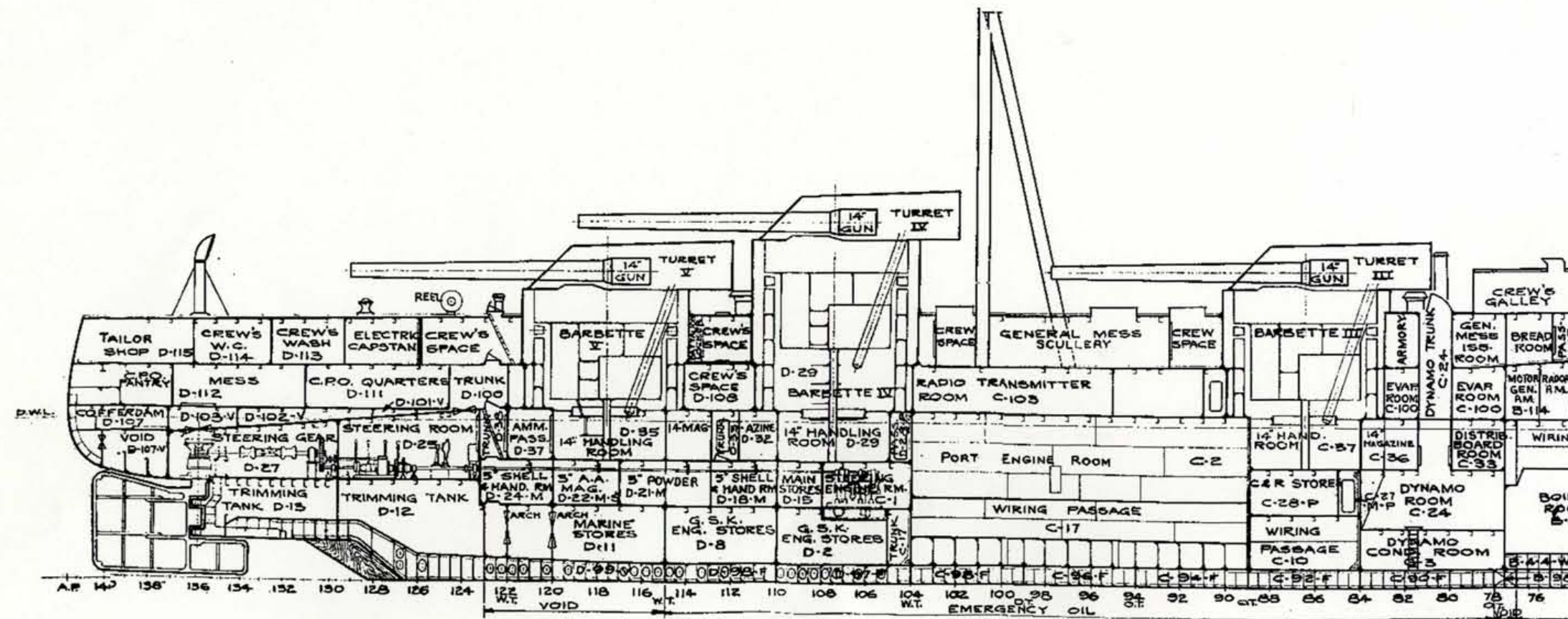
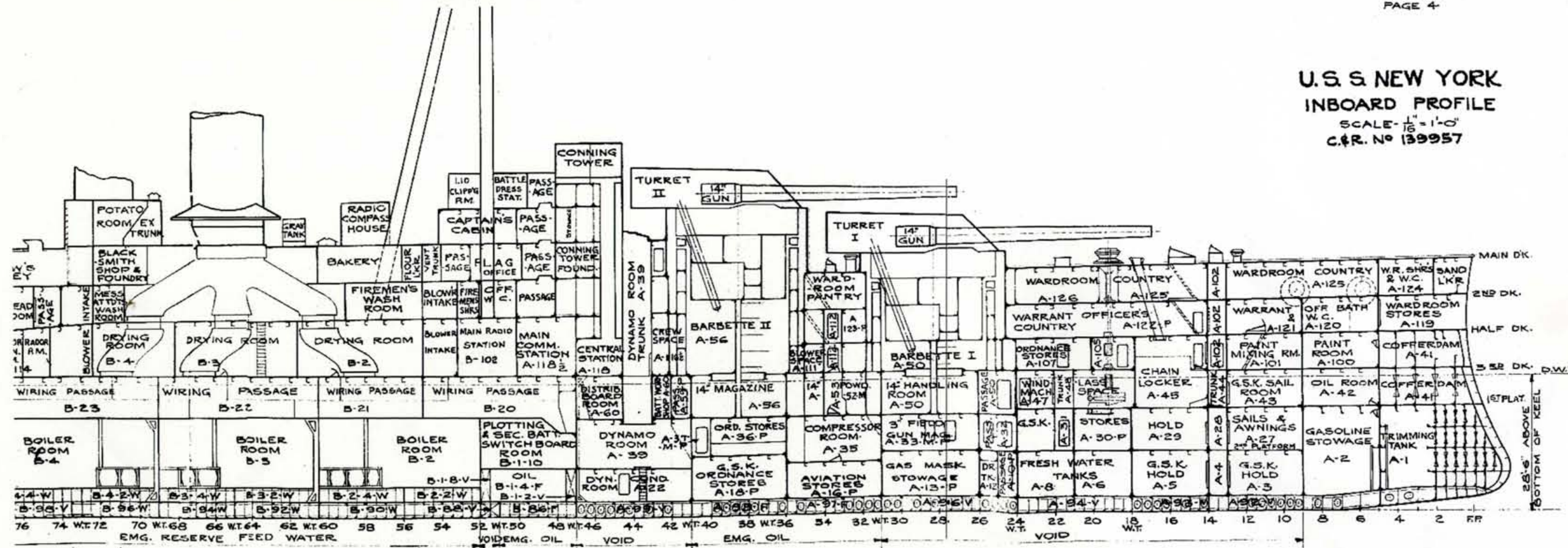


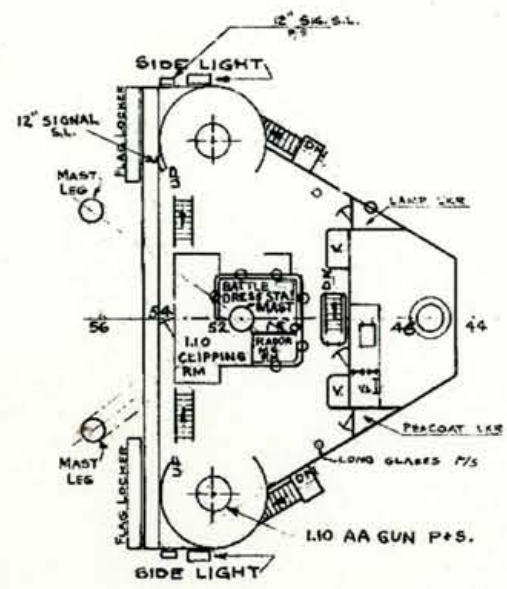
U.S.S. NEW YORK
OUTBOARD PROFILE
SCALE - $\frac{1}{16}'' = 1'-0''$
C.&R. NO 139957



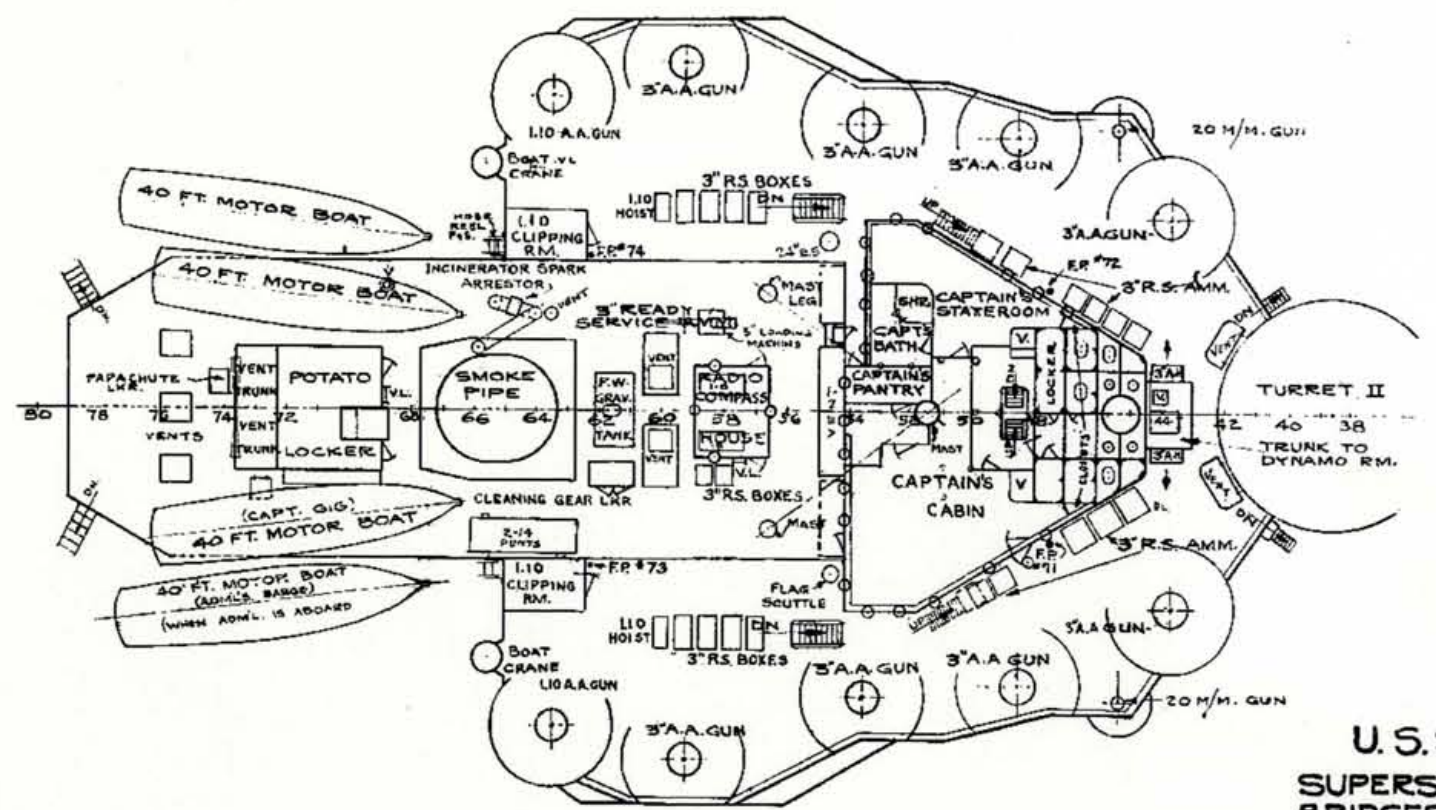
U.S.S. NEW YORK
OUTBOARD PROFILE
SCALE - $\frac{1}{16}'' = 1'-0''$
C.&R. NO 139957

U.S.S. NEW YORK
INBOARD PROFILE
SCALE - 1/16" = 1'-0"
C.R. NO 139957

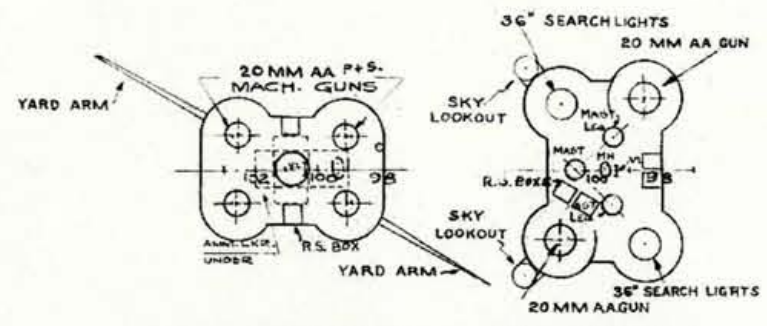




SIGNAL BRIDGE

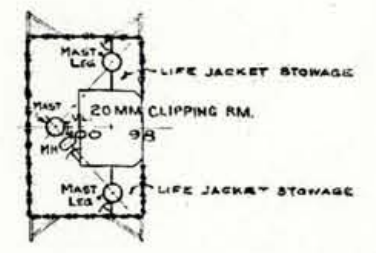


U.S.S. NEW YORK
SUPERSTRUCTURE DECK
BRIDGES & PLATFORMS
C.R. NO 139957 SCALE - 1/16" = 1'-0"

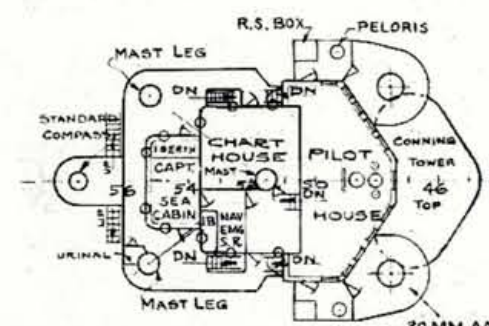


20 MM. A.A. MACH. GUN MAINMAST

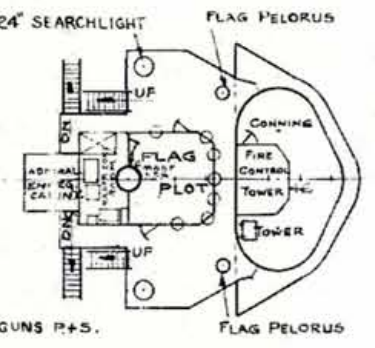
SEARCHLIGHT PLATFORM MAINMAST



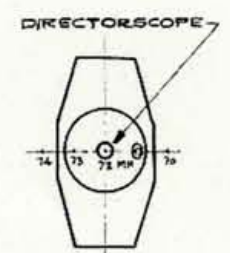
MOVIES OPERATING PLATFORM MAINMAST



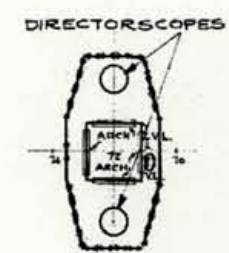
NAVIGATING BRIDGE



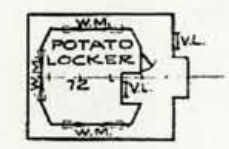
FLAG BRIDGE



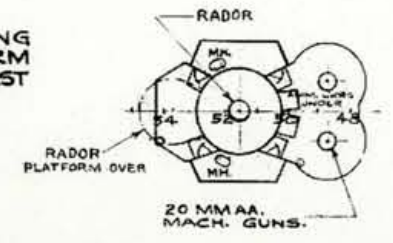
MAIN BATT. CONT. STA. AFT. DEF. STA.



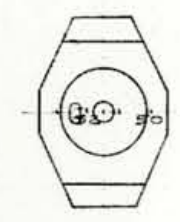
SEC. BATT. CONT. STA. AFT. DEF. STA.



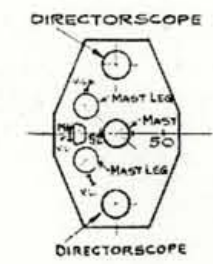
VEGETABLE STORAGE AFT. DEF. STA.



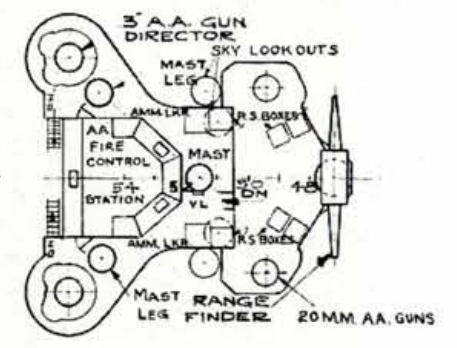
20 MM AA, MACH. GUN PLATE & MAIN BAT. DIRECTOR STATION FOREMAST



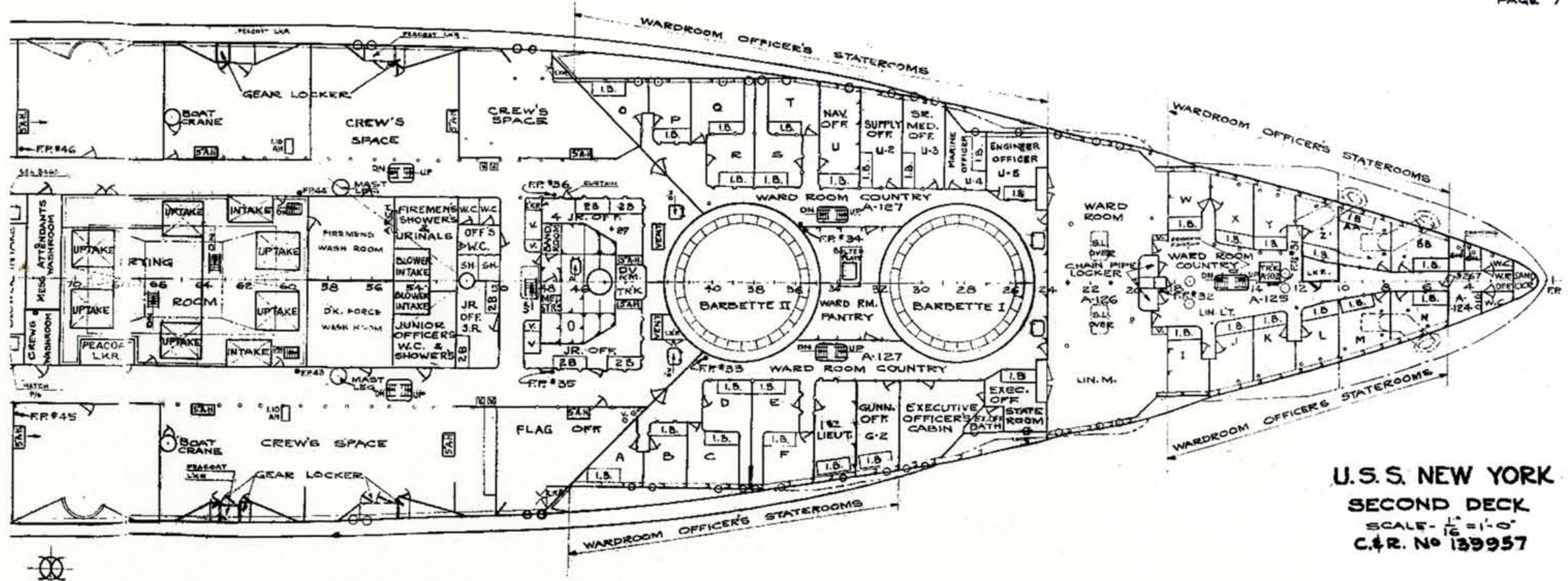
MAIN BATT. CONT. & SPOTT. STATION FOREMAST



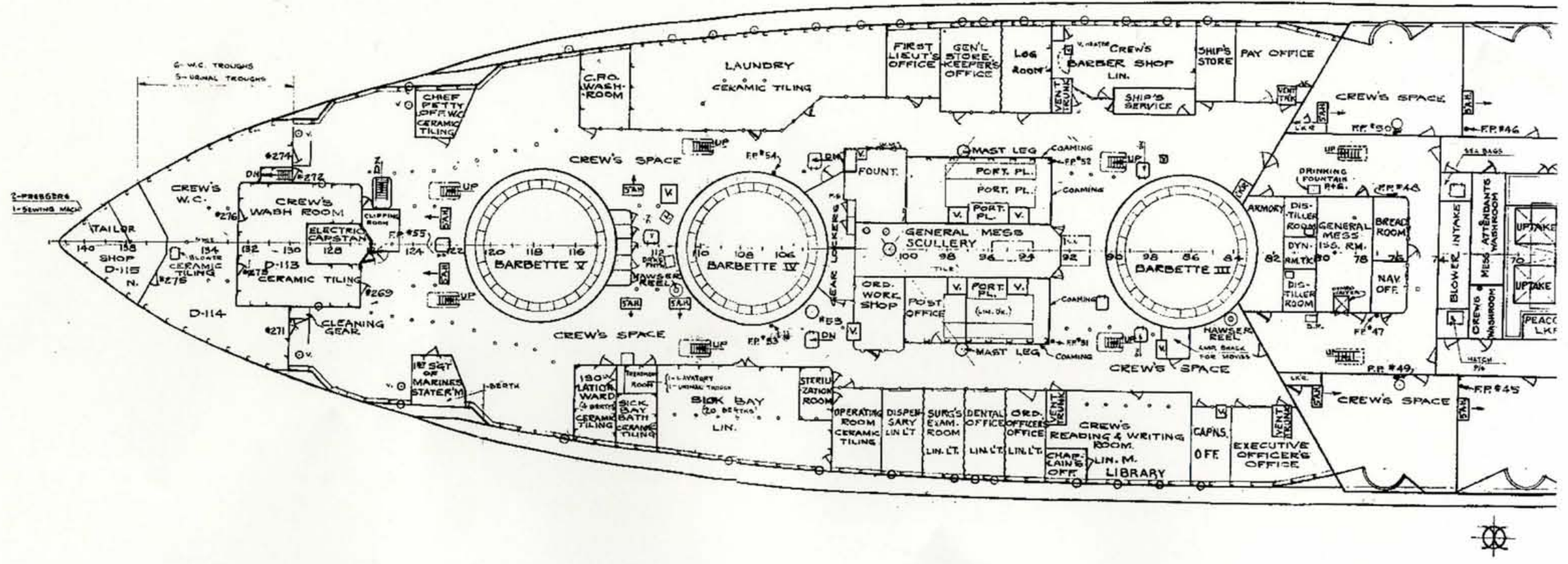
SECONDARY BATTERY TOP FOREMAST

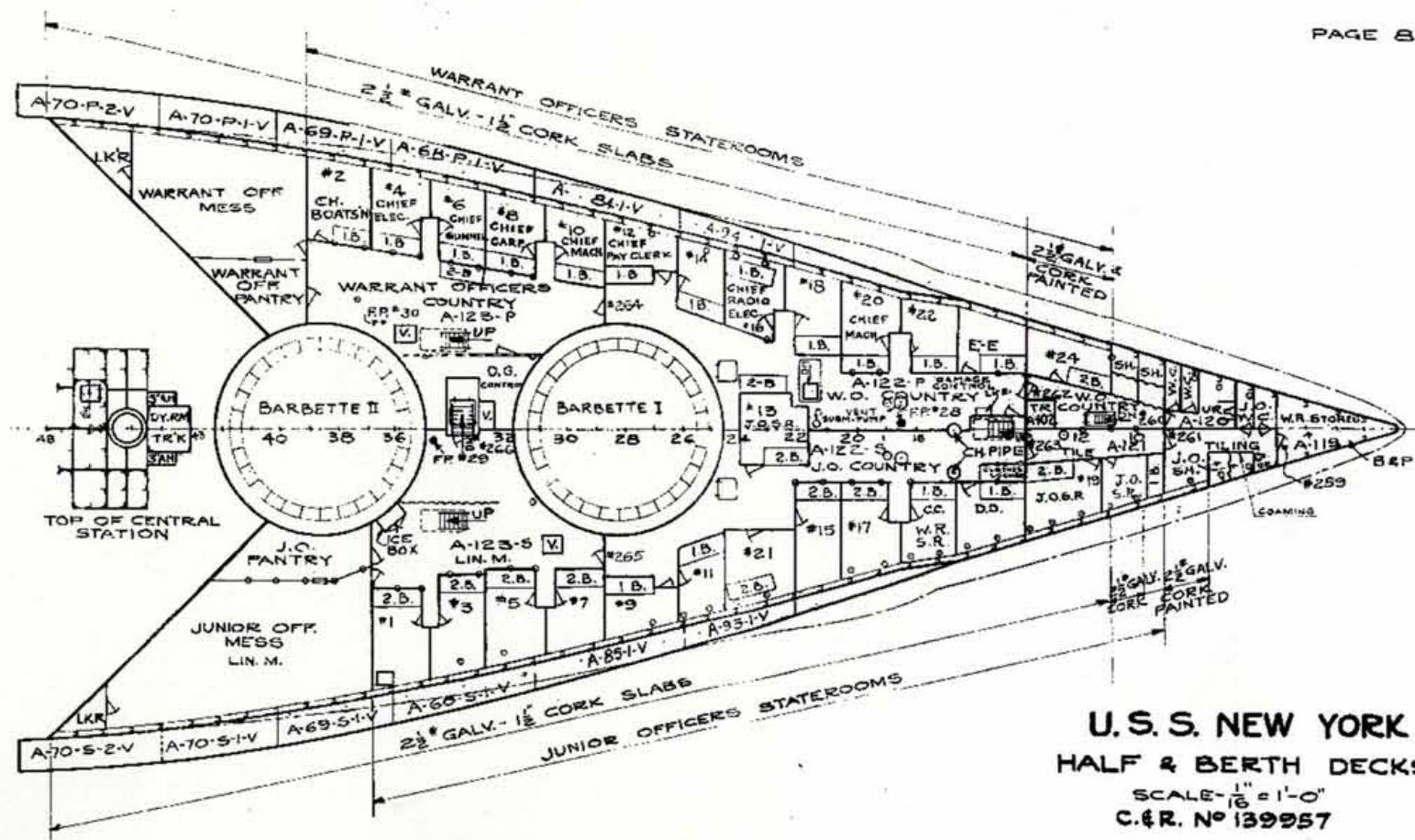
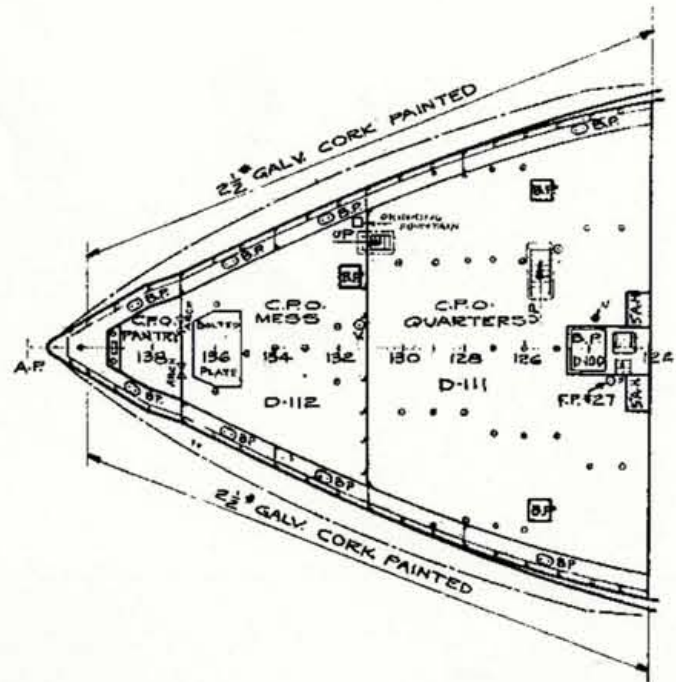


A.A. CONTROL PLATF. & TOP OF PILOT HOUSE

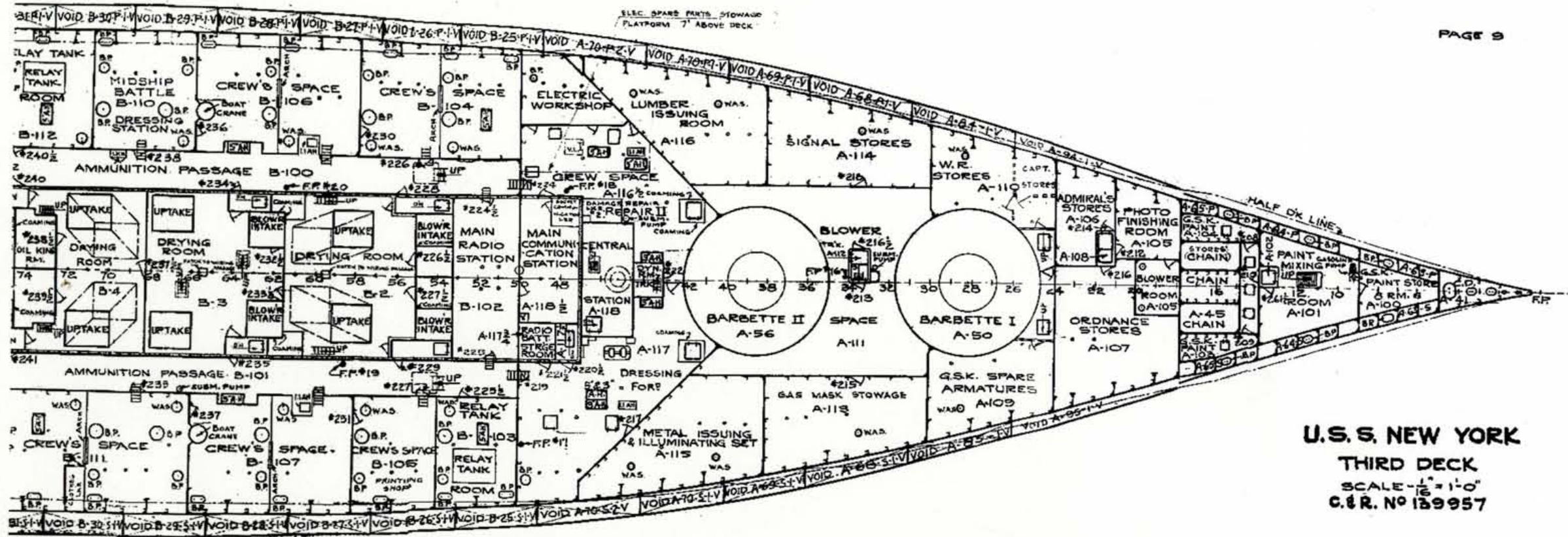


U.S.S. NEW YORK
SECOND DECK
 SCALE - 1/16" = 1'-0"
 C.&R. No 139957

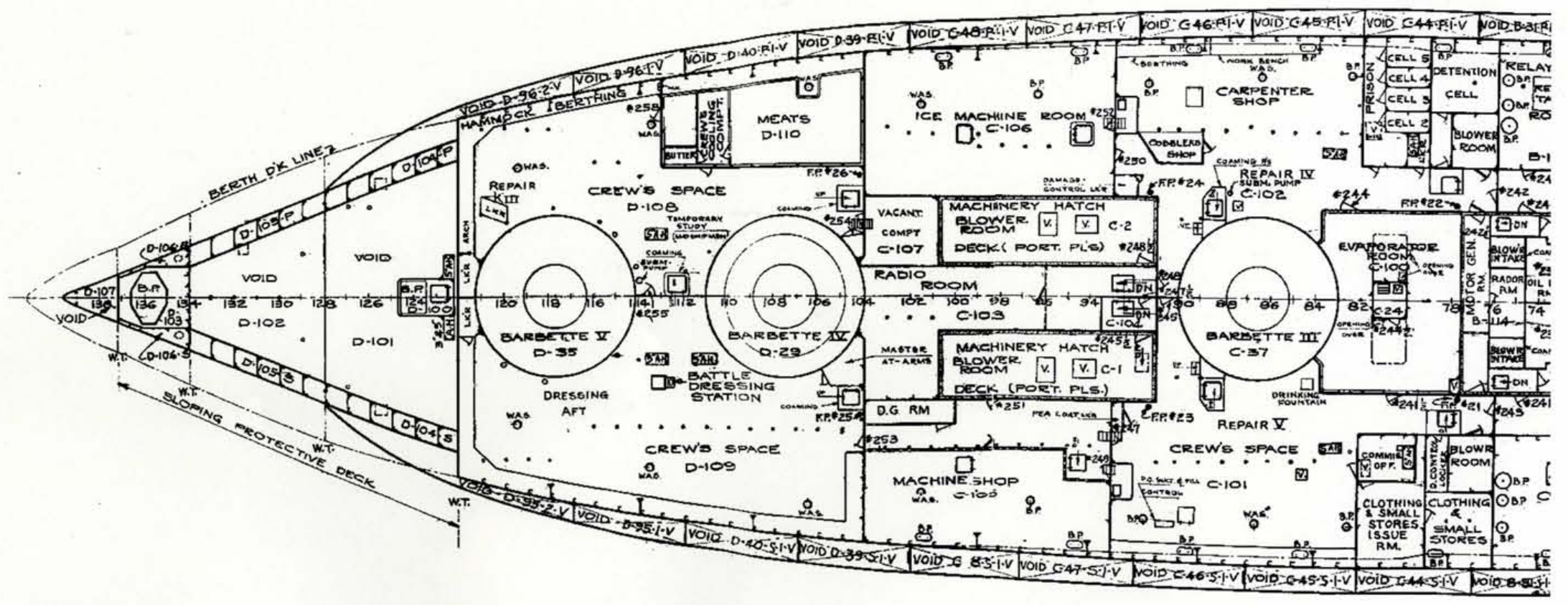


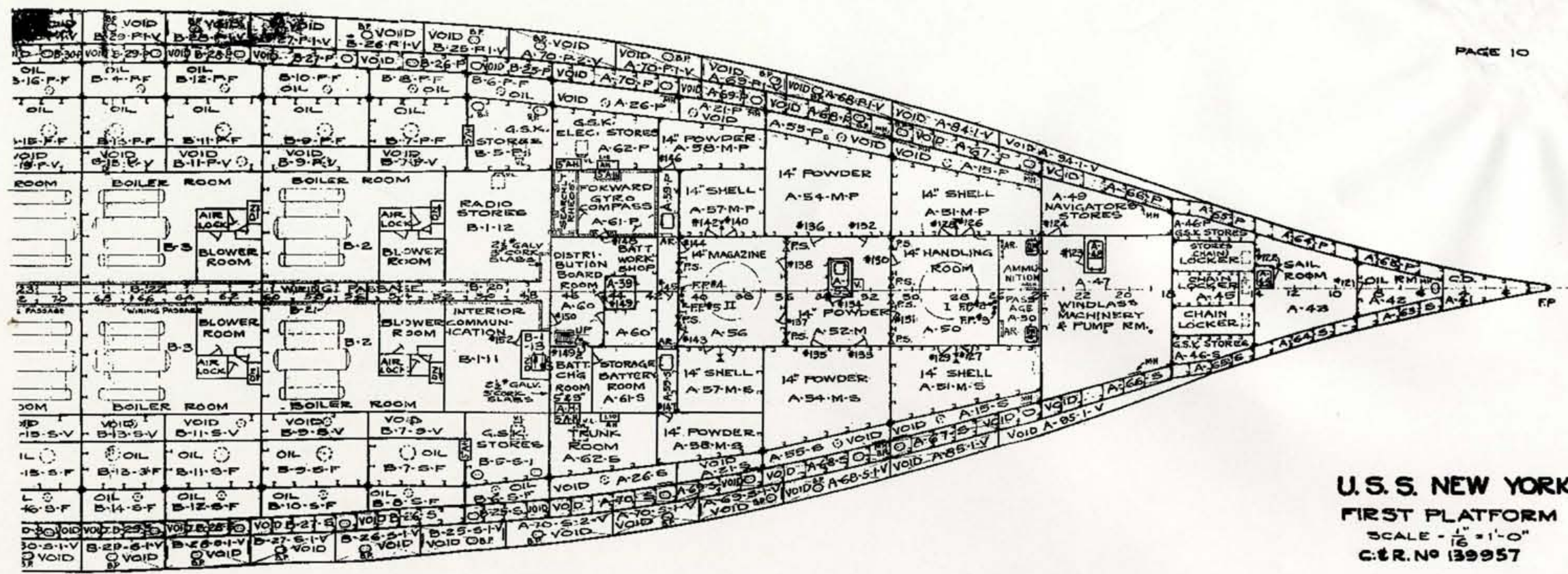


U.S.S. NEW YORK
HALF & BERTH DECKS
SCALE - 1/16" = 1'-0"
C.&R. No 139957

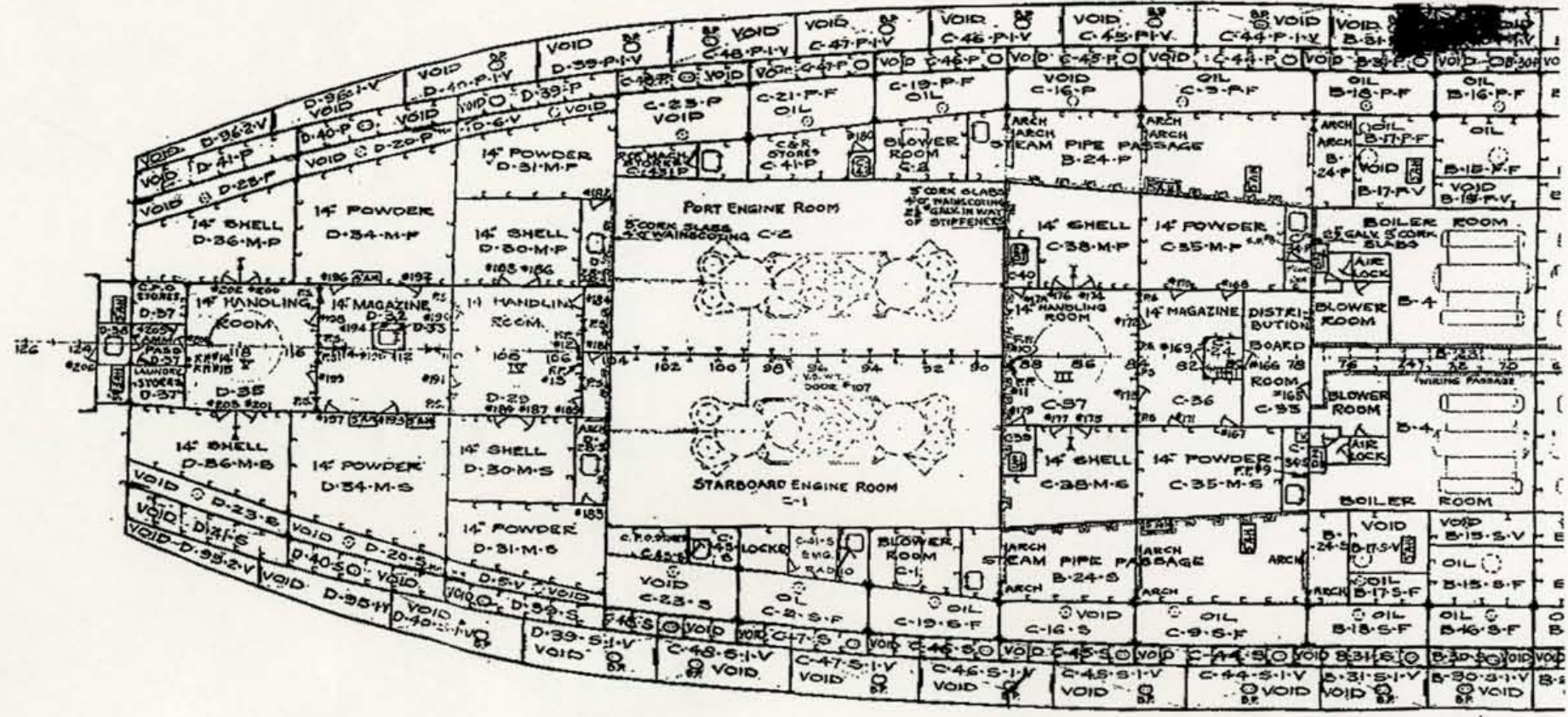


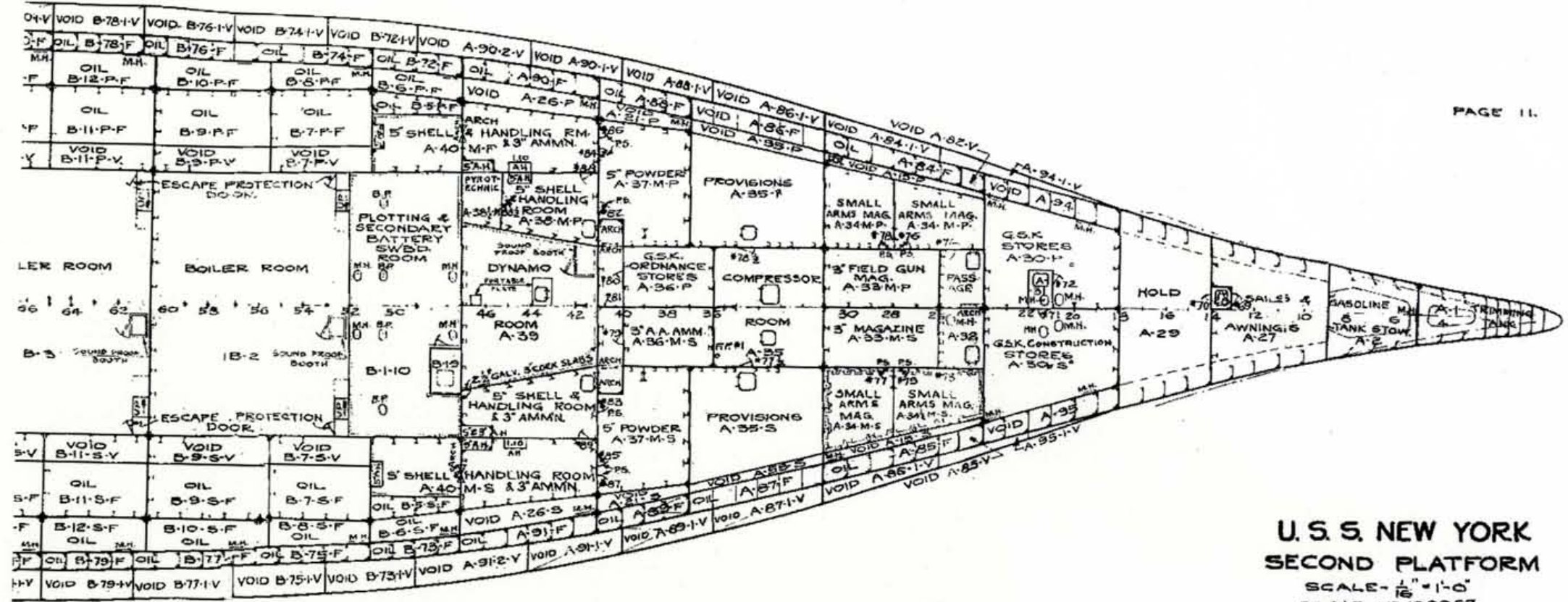
U.S.S. NEW YORK
 THIRD DECK
 SCALE - 1/2" = 1'-0"
 C. & R. NO 139957



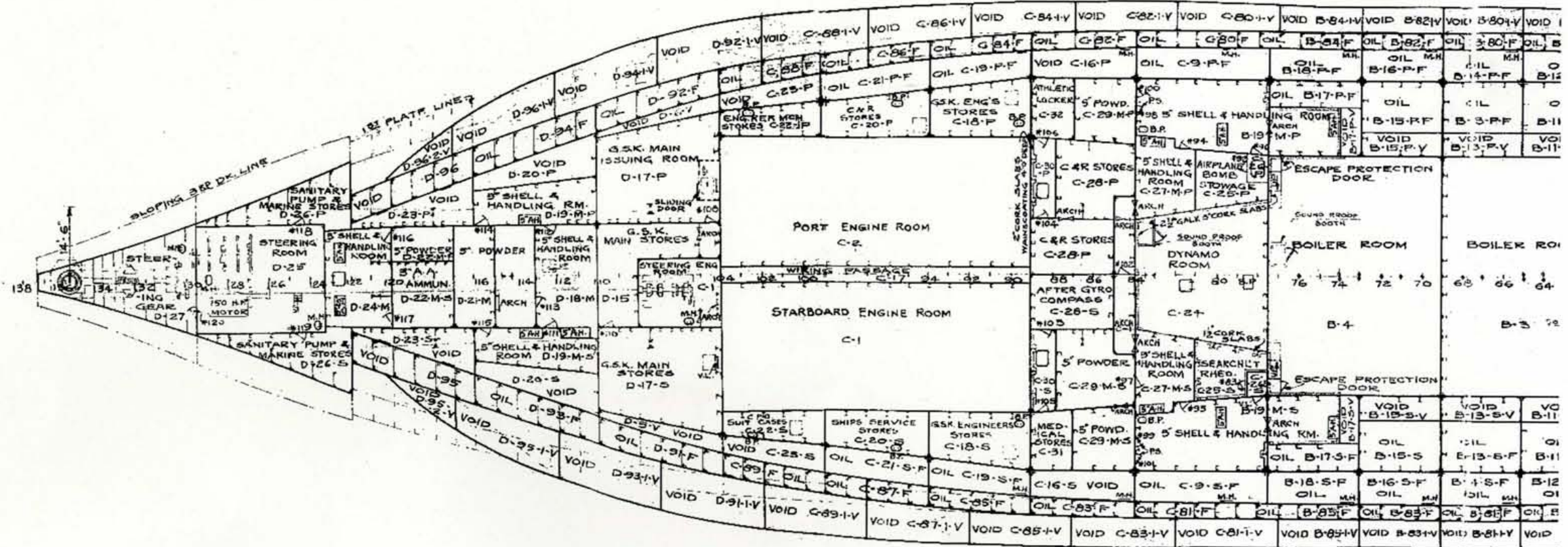


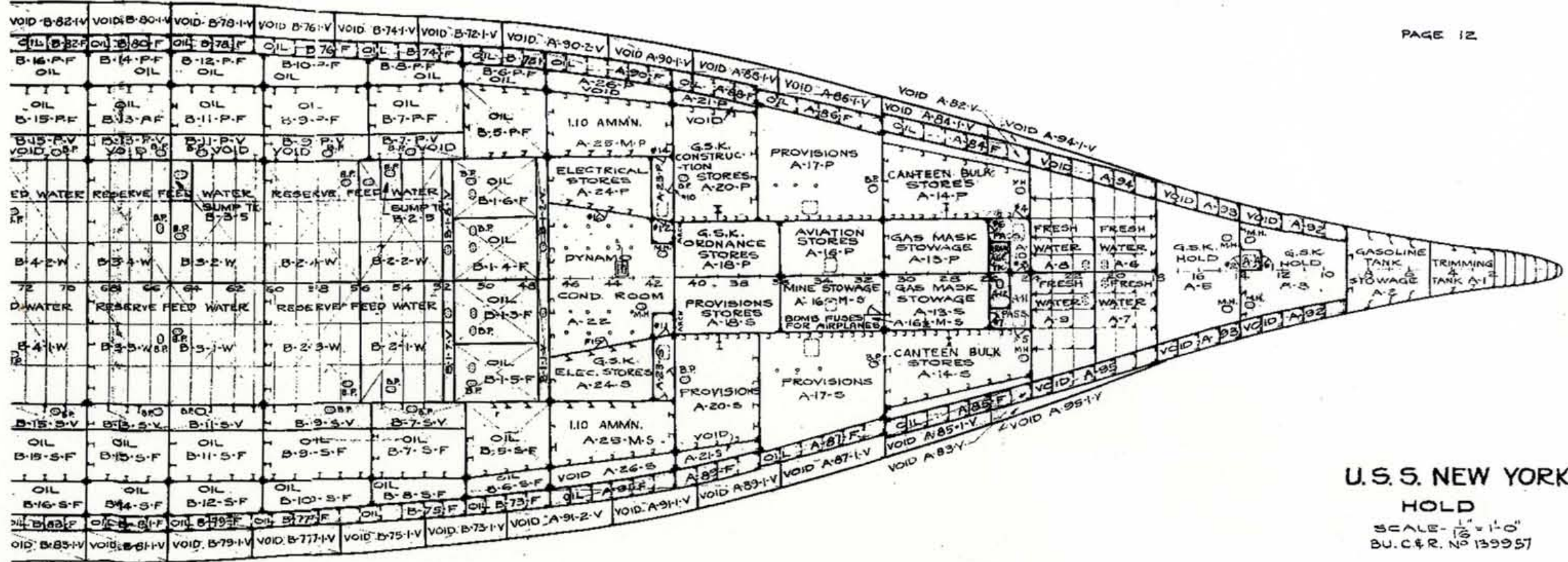
U.S.S. NEW YORK
FIRST PLATFORM
 SCALE - 1/16" = 1'-0"
 C. & R. NO 139957



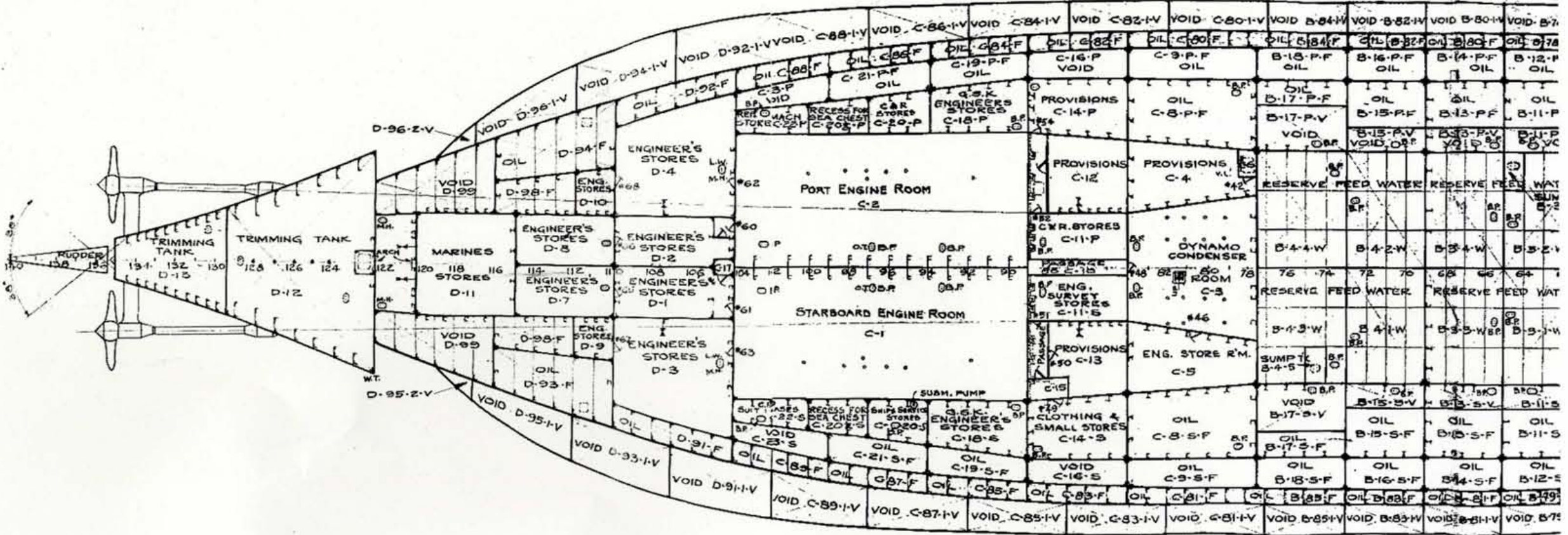


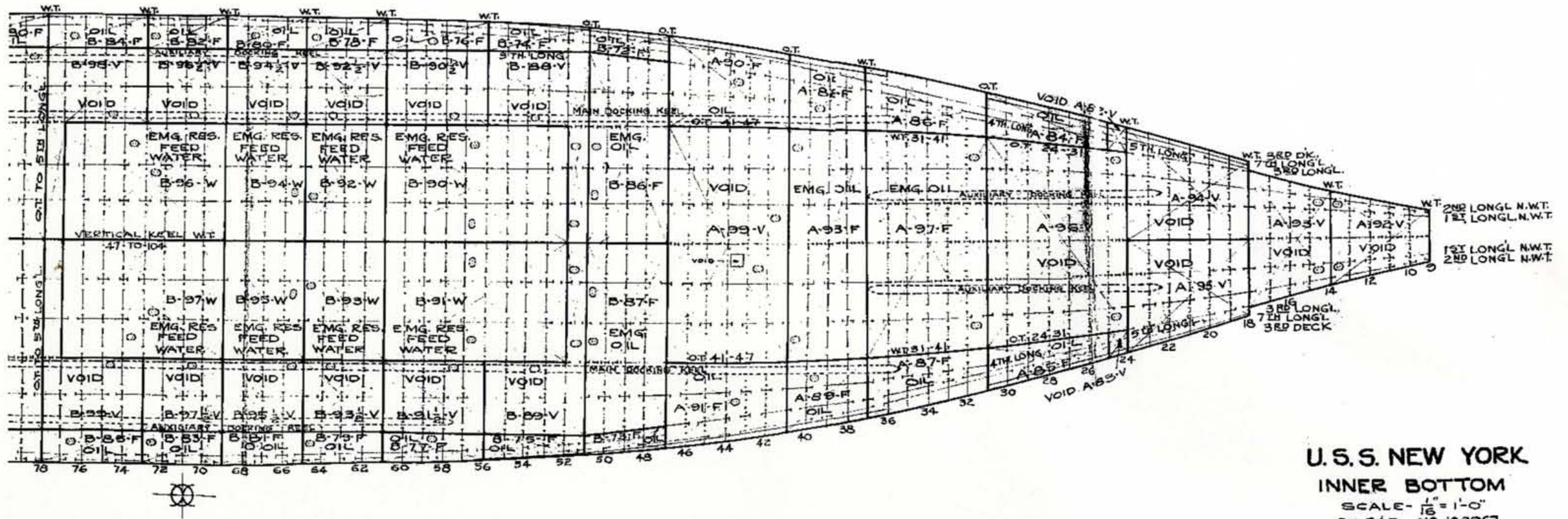
U. S. S. NEW YORK
SECOND PLATFORM
 SCALE - $\frac{1}{16}'' = 1'-0''$
 BU. C&R. NO 139957





U.S.S. NEW YORK
 HOLD
 SCALE - $\frac{1}{8}'' = 1'-0''$
 BU. C & R. NO. 139957





U.S.S. NEW YORK
INNER BOTTOM
 SCALE - $\frac{1}{16}'' = 1'-0''$
 BU.C.&R. NO 139957

